

À des fins de recherche uniquement

# Anticorps Monoclonal anti-ALCAM

Numéro de catalogue: **CL488-65223**



## Informations de base

Numéro de catalogue:  
CL488-65223

Taille:  
100tests , 5 µl/test

Hôte:  
Mouse

Isotype:  
IgG1, kappa

Numéro d'acquisition GenBank:  
BC057809

Identification du gène (NCBI):  
214

Nom complet:  
activated leukocyte cell adhesion  
molecule

MW calculé  
105 kDa

Méthode de purification:  
Purification par affinité

CloneNo.:  
3A6

Excitation/Emission maxima  
wavelengths:  
493 nm / 522 nm

## Applications

Applications testées:  
FC

Spécificité de l'espèce:  
Humain

## Informations générales

Activated leukocyte cell adhesion molecule (ALCAM, also known as CD166) is a cell adhesion molecule that belongs to the immunoglobulin superfamily. It is involved in cell-cell adhesion through homophilic and heterophilic (to CD6) interactions. ALCAM is widely expressed in a variety of normal tissues and cell types, including activated T cells and monocytes, epithelial cells, fibroblasts, neuronal cells, hepatocytes, and bone marrow mesenchymal stem cells (PMID: 7760007; 25221999). Altered ALCAM expression has been associated with the differentiation state and progression in some neoplasms including melanoma, prostate, colorectal, and breast cancers (PMID: 20461761; 18172759).

## Stockage

Stockage:  
Store at 2-8°C. Avoid exposure to light. Stable for one year after shipment.  
Tampon de stockage:  
PBS with 0.09% sodium azide and 0.5% BSA.

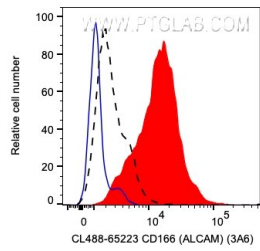
For technical support and original validation data for this product please contact:

T: 1 (888) 4PTGLAB (1-888-478-4522) (toll free  
in USA), or 1(312) 455-8498 (outside USA)

E: [proteintech@ptglab.com](mailto:proteintech@ptglab.com)  
W: [ptglab.com](http://ptglab.com)

**This product is exclusively available under Proteintech Group brand and is not available to purchase from any other manufacturer.**

## Données de validation sélectionnées



1X10<sup>6</sup> PHA-treated (day 3) human PBMCs were surface stained with 5 ul CoraLite® Plus 488 Anti-Human ALCAM (CL488-65223, Clone:3A6) (red), or unstained (blue). The black dashed line indicates unactivated PBMCs surface stained with 5 ul CoraLite® Plus 488 Anti-Human ALCAM (CL488-65223, Clone:3A6). Cells were not fixed. Monocytes were gated.