

À des fins de recherche uniquement

Anticorps Monoclonal anti-CD85j / LILRB1



Numéro de catalogue: **CL488-65238**

Informations de base

Numéro de catalogue:
CL488-65238

Taille:
100tests, 5 ul/test

Hôte:
Mouse

Isotype:
IgG2b, kappa

Numéro d'acquisition GenBank:
BC015731

Identification du gène (NCBI):
10859

Nom complet:
leukocyte immunoglobulin-like
receptor, subfamily B (with TM and
ITIM domains), member 1

MW calculé
71 kDa

Méthode de purification:
N/A

CloneNo.:
GHI/75

Excitation/Emission maxima
wavelengths:
493 nm / 522 nm

Applications

Applications testées:
FC

Spécificité de l'espèce:
Humain

Informations générales

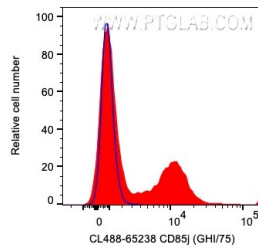
Stockage

Stockage:
Store at 2-8°C. Avoid exposure to light. Stable for one year after shipment.
Tampon de stockage:
PBS with 0.09% sodium azide and 0.5% BSA.

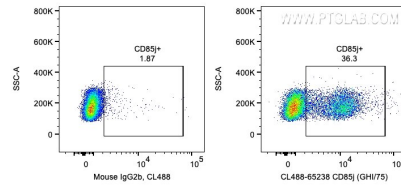
For technical support and original validation data for this product please contact:
T: 1 (888) 4PTGLAB (1-888-478-4522) (toll free in USA), or 1(312) 455-8498 (outside USA)
E: proteintech@ptglab.com
W: ptglab.com

This product is exclusively available under Proteintech Group brand and is not available to purchase from any other manufacturer.

Données de validation sélectionnées



1X10⁶ human PBMCs were surface stained with 5 ul CoraLite® Plus 488 Anti-Human CD85j / IL1RB1 (CL488-65238, Clone:GHI/75) (red) or Mouse IgG2b Isotype Control. Cells were not fixed. Lymphocytes were gated.



1X10⁶ human PBMCs were surface stained with 5 ul CoraLite® Plus 488 Anti-Human CD85j / IL1RB1 (CL488-65238, Clone:GHI/75) or Mouse IgG2b Isotype Control. Cells were not fixed. Lymphocytes were gated.