

À des fins de recherche uniquement

Anticorps Monoclonal anti-CD26

Numéro de catalogue: **CL488-65267**



Informations de base

Numéro de catalogue:

CL488-65267

Taille:

100tests , 5 µl/test

Hôte:

Mouse

Isotype:

IgG2a, kappa

Numéro d'acquisition GenBank:

BC013329

Identification du gène (NCBI):

1803

Nom complet:

dipeptidyl-peptidase 4

MW calculé

88 kDa

Méthode de purification:

Purification par affinité

CloneNo.:

BA5b

Excitation/Emission maxima
wavelengths:

493 nm / 522 nm

Applications

Applications testées:

FC

Spécificité de l'espèce:

Humain

Informations générales

CD26, also known as DPP4 (dipeptidyl peptidase-4), is a 110 kDa type II cell-surface glycoprotein widely expressed on T cells, activated B cells, activated NK cells and myeloid cells as well as on epithelial cells, fibroblasts, mesothelium, and endothelial cells of a variety of tissues (PMID:33777580; 26919392). It has ecto-enzyme activity in its extracellular domain and cleaves amino-terminal dipeptides with either L-proline or L-alanine at the penultimate position (PMID: 9553764). CD26 plays roles in diverse biological processes such as immunoregulation, glucose homeostasis, and tumorigenesis (PMID: 33777580).

Stockage

Stockage:

Store at 2-8°C. Avoid exposure to light. Stable for one year after shipment.

Tampon de stockage:

PBS with 0.09% sodium azide and 0.5% BSA.

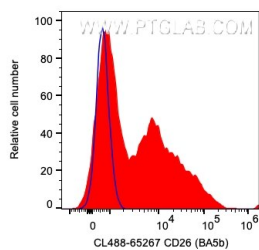
For technical support and original validation data for this product please contact:

T: 1 (888) 4PTGLAB (1-888-478-4522) (toll free
in USA), or 1(312) 455-8498 (outside USA)

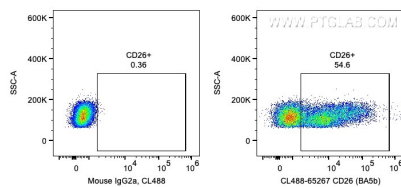
E: proteintech@ptglab.com
W: ptglab.com

This product is exclusively available under Proteintech Group brand and is not available to purchase from any other manufacturer.

Données de validation sélectionnées



1X10⁶ human PBMCs were surface stained with 5 ul CoraLite® Plus 488 Anti-Human CD26 (CL488-65267, Clone:BA5b) (red) or Mouse IgG2a Isotype Control. Cells were not fixed. Lymphocytes were gated.



1X10⁶ human PBMCs were surface stained with 5 ul CoraLite® Plus 488 Anti-Human CD26 (CL488-65267, Clone:BA5b) or Mouse IgG2a Isotype Control. Cells were not fixed. Lymphocytes were gated.