

À des fins de recherche uniquement

# Anticorps Monoclonal anti-Beta Actin



Numéro de catalogue: CL488-66009

4 Publications

## Informations de base

<b>Numéro de catalogue:</b> CL488-66009	<b>Numéro d'acquisition GenBank:</b> NM_001101	<b>Méthode de purification:</b> Purification par protéine A
<b>Taille:</b> 100ul , Concentration: 1000 µg/ml by 60 Nanodrop;	<b>Identification du gène (NCBI):</b> actin, beta	<b>CloneNo.:</b> 2D4H5
<b>Hôte:</b> Mouse	<b>Nom complet:</b> actin, beta	<b>Dilutions recommandées:</b> WB 1:2000-1:10000 IF 1:50-1:500
<b>Isotype:</b> IgG2b	<b>MW calculé</b> 42 kDa	<b>Excitation/Emission maxima wavelengths:</b> 493 nm / 522 nm

## Applications

<b>Applications testées:</b> FC (Intra), IF, WB	<b>Contrôles positifs:</b> WB : cellules HepG2, cellules HEK-293, cellules HeLa IF : cellules MDCK, cellules U2OS
<b>Demandes citées:</b> IF, WB	
<b>Spécificité de l'espèce:</b> Humain, poisson-zèbre, rat, singe, souris, Hamster	
<b>Espèces citées:</b> Humain, rat, souris	

## Informations générales

Actins are highly conserved globular proteins that are involved in various types of cell motility and are ubiquitously expressed in all eukaryotic cells. At least six isoforms of actins are known in mammals and other vertebrates: alpha (ACTC1, cardiac muscle 1), alpha 1 (ACTA1, skeletal muscle) and 2 (ACTA2, aortic smooth muscle), beta (ACTB), gamma 1 (ACTG1) and 2 (ACTG2, enteric smooth muscle). Beta and gamma 1 are two non-muscle actin proteins. Most actins consist of 376aa, while ACTG2 (rich in muscles) has 375aa and ACTG1(found in non-muscle cells) has only 374aa. Beta actin has been widely used as the internal control in RT-PCR and Western Blotting as a 42-kDa protein. However, the 41 kDa cleaved fragment of beta actin can be generated during apoptosis process. This antibody can recognize all the actins. The isotype of this antibody is IgG2b. And the antibody is CL488 (Ex/Em 488 nm/515 nm) conjugated.

## Publications notables

Autrice	Pubmed ID	Journal	Application
Xueli Yu	36106568	Br J Pharmacol	WB
Junqi Fu	36133745	Mediators Inflamm	WB
Chui-Wei Wong	35876189	Nanoscale	IF

## Stockage

**Stockage:**  
Stocker à -20 °C. Éviter toute exposition à la lumière. Stable pendant un an après l'expédition.  
**Tampon de stockage:**  
PBS avec glycérol à 50 %, Proclin300 à 0,05 % et BSA à 0,5 %, pH 7,3.  
L'aliquotage n'est pas nécessaire pour le stockage à -20C

\*\*\* Les 20ul contiennent 0,1% de BSA.

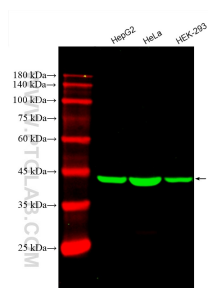
For technical support and original validation data for this product please contact:

T: 1 (888) 4PTGLAB (1-888-478-4522) (toll free in USA), or 1(312) 455-8498 (outside USA)

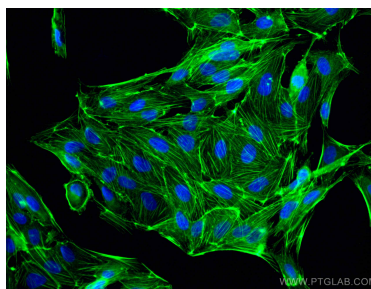
E: [proteintech@ptglab.com](mailto:proteintech@ptglab.com)  
W: [ptglab.com](http://ptglab.com)

This product is exclusively available under Proteintech Group brand and is not available to purchase from any other manufacturer.

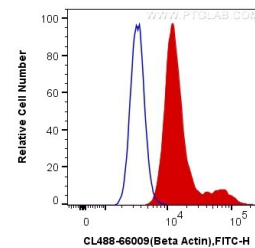
## Données de validation sélectionnées



Various lysates were subjected to SDS PAGE followed by western blot with CL488-66009 (Beta Actin antibody) at dilution of 1:5000 incubated at room temperature for 1.5 hours.



Immunofluorescent analysis of (-20°C Methanol) fixed MDCK cells using CoraLite® Plus 488 Beta Actin antibody (CL488-66009, Clone: 2D4H5) at dilution of 1:200.



1X10<sup>6</sup> HeLa cells were intracellularly stained with 0.8 ug CoraLite® Plus 488 Anti-Human Beta Actin (CL488-66009, Clone:2D4H5) (red), or 0.8 ug Mouse IgG2b Isotype Control (CL488-66360-3, Clone: K11B8C4B5) (blue). Cells were fixed with 4% PFA and permeabilized with Flow Cytometry Perm Buffer (PF00011-C).