

À des fins de recherche uniquement

Anticorps Monoclonal anti-HLA class I ABC



Numéro de catalogue: **CL488-66013**

Phare

Informations de base

Numéro de catalogue: CL488-66013	Numéro d'acquisition GenBank: BC003069	Méthode de purification: Purification par protéine A
Taille: 100ul , Concentration: 1000 µg/ml by Nanodrop;	Identification du gène (NCBI): 3105	CloneNo.: 5C5B7
Hôte: Mouse	Nom complet: major histocompatibility complex, class I, A	Dilutions recommandées: IF 1:50-1:500
Isotype: IgG2b	MW calculé 41 kDa	Excitation/Emission maxima wavelengths: 493 nm / 522 nm
Immunogen Catalog Number: AG7488	MW observés: 40-44 kDa	

Applications

Applications testées:
FC, IF

Spécificité de l'espèce:
Humain, porc

Contrôles positifs:

IF : tissu d'amygdalite humain, cellules Raji

Informations générales

Human major histocompatibility complex (MHC) antigens, also referred to as human leukocyte antigens (HLA), are encoded by genes located on the short arm of chromosome 6 (6p21.3). There are two classes of HLA antigens: class I (HLA-A, B and C) and class II (HLA-D). This class I molecules are polymorphic membrane glycoproteins composed of a heavy (alpha) chain (44 kDa) which is encoded by a HLA class I gene (HLA-A, B or C), and β 2-microglobulin light (beta) chain (12 kDa). They are involved in the presentation of foreign antigens to the immune system. (PMID: 667938; 3375250)

Stockage

Stockage:

Stocker à -20 °C. Éviter toute exposition à la lumière. Stable pendant un an après l'expédition.

Tampon de stockage:

PBS avec glycérol à 50 %, Proclin300 à 0,05 % et BSA à 0,5 %, pH 7,3.

L'aliquotage n'est pas nécessaire pour le stockage à -20C

***** Les 20ul contiennent 0,1% de BSA.**

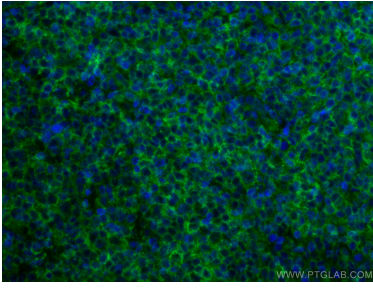
For technical support and original validation data for this product please contact:

T: 1 (888) 4PTGLAB (1-888-478-4522) (toll free
in USA), or 1(312) 455-8498 (outside USA)

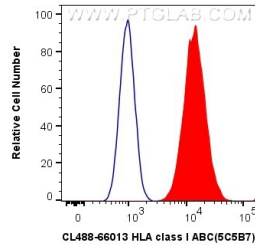
E: proteintech@ptglab.com
W: ptglab.com

This product is exclusively available under Proteintech Group brand and is not available to purchase from any other manufacturer.

Données de validation sélectionnées



Immunofluorescent analysis of (4% PFA) fixed human tonsillitis tissue using CL488-66013 (HLA class I ABC antibody) at dilution of 1:50.



1×10^6 Raji cells were surface stained with 0.4 ug CoraLite® Plus 488 Anti-Human HLA class I ABC (CL488-66013, Clone:5C5B7) (red), or 0.4 ug CoraLite® Plus 488 Mouse IgG2b Isotype Control (MPC-11) (CL488-65128, Clone: MPC-11) (blue). Cells were not fixed.