

À des fins de recherche uniquement

Anticorps Monoclonal anti-Alpha Tubulin



Numéro de catalogue: CL488-66031

3 Publications

Informations de base

Numéro de catalogue: CL488-66031	Numéro d'acquisition GenBank: BC009314	Méthode de purification: Purification par protéine A
Taille: 100ul, Concentration: 1000 µg/ml by Nanodrop;	Identification du gène (NCBI): 10376	CloneNo.: 1E4C11
Hôte: Mouse	Nom complet: tubulin, alpha 1b	Dilutions recommandées: WB 1:300-1:600 IF 1:50-1:500
Isotype: IgG2b	MW calculé: 50 kDa	Excitation/Emission maxima wavelengths: 493 nm / 522 nm
Immunogen Catalog Number: AG18034	MW observés: 50-55 kDa	

Applications

Applications testées:

FC (Intra), IF, WB

Demandes citées:

IF

Spécificité de l'espèce:

canin, Humain, rat, souris

Espèces citées:

Humain

Contrôles positifs:

WB : cellules HepG2, cellules HEK-293, cellules HeLa, cellules HSC-T6, cellules NIH/3T3

IF : cellules HeLa, tissu embryonnaire de souris

Informations générales

There are five tubulins in human cells: alpha, beta, gamma, delta, and epsilon. Tubulins are conserved across species. They form heterodimers, which multimerize to form a microtubule filament. An alpha and beta tubulin heterodimer is the basic structural unit of microtubules. The heterodimer does not come apart once formed. The alpha and beta tubulins, which are each about 55 kDa MW, are homologous but not identical. Alpha tubulin is useful for scientists across fields as an internal control due to its high, ubiquitous expression pattern. Tubulin expression may vary according to resistance to antimicrobial and antimetabolic drugs. This antibody is CL488(Ex/Em 488 nm/515 nm) conjugated.

Publications notables

Autrice	Pubmed ID	Journal	Application
Xueguang Zhang	31571197	Clin Genet	
Chuan Jiang	33968654	Transl Androl Urol	IF
Yaoqiu Wu	36638901	Free Radic Biol Med	IF

Stockage

Stockage:

Stocker à -20°C. Éviter toute exposition à la lumière. Stable pendant un an après l'expédition.

Tampon de stockage:

PBS avec glycérol à 50 %, Proclin300 à 0,05 % et BSA à 0,5 %, pH 7,3.

L'aliquotage n'est pas nécessaire pour le stockage à -20C

*** Les 20ul contiennent 0,1% de BSA.

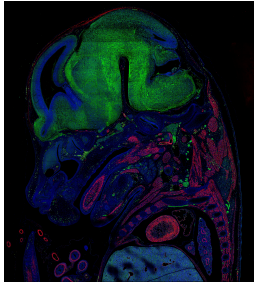
For technical support and original validation data for this product please contact:

T: 1 (888) 4PTGLAB (1-888-478-4522) (toll free
in USA), or 1(312) 455-8498 (outside USA)

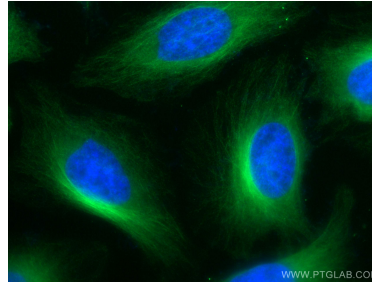
E: proteintech@ptglab.com
W: ptglab.com

This product is exclusively available under Proteintech Group brand and is not available to purchase from any other manufacturer.

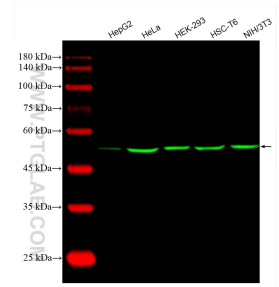
Données de validation sélectionnées



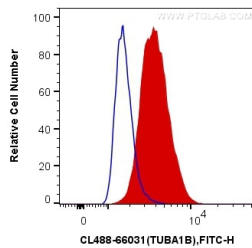
E14.5 FFPE mouse embryo section stained for smooth muscle actin (red, Cat. No 80008-1-RR) and alpha tubulin (green, Cat. CL488-66031). The alpha tubulin was conjugated to CoraLite-488 fluorescent dye. In red, you can see muscle tissue clearly stained including the tongue, heart, and arteries. Nerves and neurons are stained green since they are rich in tubulin. Image credit: @Immunofluorescence on Instagram



Immunofluorescent analysis of (4% PFA) fixed HeLa cells using the CoraLite® Plus 488-conjugated version of this antibody, CL488-66031 (alpha Tubulin antibody), at dilution of 1:100.



Various lysates were subjected to SDS PAGE followed by western blot with CL488-66031 (Alpha Tubulin antibody) at dilution of 1:500 incubated at room temperature for 1.5 hours.



1X10⁶ HepG2 cells were intracellularly stained with 0.4 ug CoraLite® Plus 488 Anti-Human Alpha Tubulin (CL488-66031, Clone:1E4C11) (red), or 0.4 ug Control Antibody. Cells were fixed with 4% PFA and permeabilized with Flow Cytometry Perm Buffer (PF00011-C).