

À des fins de recherche uniquement

Anticorps Monoclonal anti-RBM15

Numéro de catalogue: **CL488-66059** **Phare**



Informations de base

Numéro de catalogue:	CL488-66059	Numéro d'acquisition GenBank:	BC006397	Méthode de purification:	Purification par protéine A
Taille:	100ul , Concentration: 1000 µg/ml by Nanodrop;	Identification du gène (NCBI):	64783	CloneNo.:	4A1A4
Hôte:	Mouse	Nom complet:	RNA binding motif protein 15	Excitation/Emission maxima wavelengths:	493 nm / 522 nm
Isotype:	IgG2a	MW calculé:	105 kDa		
Immunogen Catalog Number:	AG17970	MW observés:	107 kDa		

Applications

Applications testées:
FC (Intra)
Spécificité de l'espèce:
Humain

Informations générales

RNA-binding motif protein 15 (RBM15) belongs to the SPEN protein family, which have repressor function in several signaling pathway, and may bind to RNA through interaction with spliceosome components. It was first described as a 5' translocation partner of the MAL gene in t(1,22)(p13;q13) infant acute megakaryocytic leukemia, and it functions in murine hematopoiesis through modulating Notch-induced transcriptional activation, which play crucial roles in leukemogenesis. Decreasing RBM15 levels with RNA interference could inhibit the growth and proliferation, block the cell cycle, and induce apoptosis in CML cells.

Stockage

Stockage:
Stocker à -20 °C. Éviter toute exposition à la lumière.
Tampon de stockage:
PBS avec glycérol à 50 %, Proclin300 à 0,05 % et BSA à 0,5 %, pH 7,3.
L'aliquotage n'est pas nécessaire pour le stockage à -20C

*** Les 20ul contiennent 0,1% de BSA.

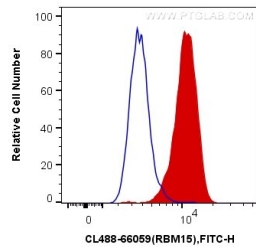
For technical support and original validation data for this product please contact:

T: 1 (888) 4PTGLAB (1-888-478-4522) (toll free in USA), or 1(312) 455-8498 (outside USA)

E: proteintech@ptglab.com
W: ptglab.com

This product is exclusively available under Proteintech Group brand and is not available to purchase from any other manufacturer.

Données de validation sélectionnées



1X10⁶ HeLa cells were intracellularly stained with 0.4 ug Coralite® Plus 488 Anti-Human RBM15 (CL488-66059, Clone:4A1A4) (red), or 0.4 ug Mouse IgG2a Isotype Control (CL488-66360-2, Clone: K11A1B2A2) (blue). Cells were fixed and permeabilized with Transcription Factor Staining Buffer Kit (PF00011).