

À des fins de recherche uniquement

# Anticorps Monoclonal anti-CD31

Numéro de catalogue: CL488-66065

1 Publications



## Informations de base

Numéro de catalogue: CL488-66065	Numéro d'acquisition GenBank: BC022512	Méthode de purification: Purification par protéine A
Taille: 100ul , Concentration: 1000 µg/ml by Nanodrop;	Identification du gène (NCBI): 5175	CloneNo.: 3F8E2
Hôte: Mouse	Nom complet: platelet/endothelial cell adhesion molecule	Dilutions recommandées: IF 1:50-1:500
Isotype: IgG1	MW calculé 83 kDa	Excitation/Emission maxima wavelengths: 493 nm / 522 nm
Immunogen Catalog Number: AG1787		

## Applications

Applications testées:  
FC, IF

Demandes citées:  
IF

Spécificité de l'espèce:  
Humain

Espèces citées:  
Humain

Contrôles positifs:

IF : cellules cellulules endothéliales lymphatiques, tissu d'amygdalite humain, tissu de cancer du côlon humain

## Informations générales

Platelet endothelial cell adhesion molecule-1 (PECAM-1, CD31) is a member of the immunoglobulin gene superfamily of cell adhesion molecules. CD31 is a transmembrane glycoprotein that is highly expressed on the surface of the endothelium, making up a large portion of its intracellular junctions. PECAM-1 is also present on the surface of hematopoietic cells and immune cells including platelets, monocytes, neutrophils, natural killer cells, megakaryocytes and some types of T-cell (PMID: 9011572). As well as its role in cell-cell adhesion, PECAM-1 functions as a signaling receptor, and is involved in important physiological events such as nitric oxide production, regulation of T-cell immunity and tolerance, leukocyte transendothelial migration and inflammation and angiogenesis (PMID: 21183735; 20978210; 17872453; 20634489). This antibody is conjugated with CL488, Ex/Em 488 nm/515 nm.

## Publications notables

Autrice	Pubmed ID	Journal	Application
Jun-Qi Luo	37542027	Cell Death Dis	IF

## Stockage

Stockage:

Stocker à -20 °C. Éviter toute exposition à la lumière. Stable pendant un an après l'expédition.

Tampon de stockage:

PBS avec glycérol à 50 %, Proclin300 à 0,05 % et BSA à 0,5 %, pH 7,3.

L'aliquotage n'est pas nécessaire pour le stockage à -20C

\*\*\* Les 20ul contiennent 0,1% de BSA.

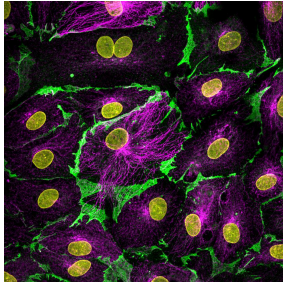
For technical support and original validation data for this product please contact:

T: 1 (888) 4PTGLAB (1-888-478-4522) (toll free in USA), or 1(312) 455-8498 (outside USA)

E: [proteintech@ptglab.com](mailto:proteintech@ptglab.com)  
W: [ptglab.com](http://ptglab.com)

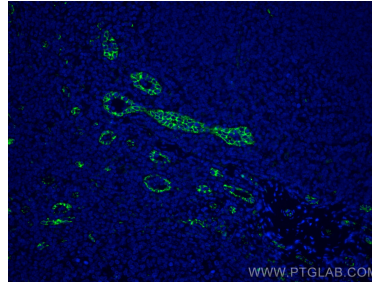
This product is exclusively available under Proteintech Group brand and is not available to purchase from any other manufacturer.

## Données de validation sélectionnées

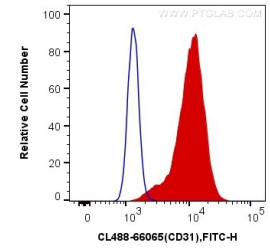


▲  
▼

Lymphatic endothelial cells were stained for CD31 (green, Cat. No CL488-66065, 1:200) and alpha tubulin (magenta, Cat. 11224-1-AP, 1:200) with DAPI as a counterstain for visualizing the nucleus (yellow). CD31 is an endothelial cell adhesion protein and was conjugated to CoraLite-488 fluorescent dye to allow for direct visualization. Alpha tubulin is a cytoskeletal protein important in cell division and migration and was visualized with an Alexa Fluor 568 secondary antibody.



Immunofluorescent analysis of (4% PFA) fixed human tonsillitis tissue using CoraLite® Plus 488 CD31 antibody (CL488-66065, Clone: 2A1E2) at dilution of 1:400.



1X10<sup>6</sup> THP-1 cells were surface stained with 0.4 ug CoraLite® Plus 488 Anti-Human CD31 (CL488-66065, Clone:3F8E2) (red), or 0.4 ug Control Antibody. Cells were not fixed.