

À des fins de recherche uniquement

# Anticorps Monoclonal anti-UBE2C

Numéro de catalogue: CL488-66087



## Informations de base

Numéro de catalogue: CL488-66087	Numéro d'acquisition GenBank: BC016292	Méthode de purification: Purification par protéine G
Taille: 100ul , Concentration: 1000 µg/ml by Nanodrop;	Identification du gène (NCBI): 11065	CloneNo.: 1C12H8
Hôte: Mouse	Nom complet: ubiquitin-conjugating enzyme E2C	Dilutions recommandées: IF 1:50-1:500
Isotype: IgG1	MW calculé 179 aa, 20 kDa	Excitation/Emission maxima wavelengths: 493 nm / 522 nm
Immunogen Catalog Number: AG19235	MW observés: 20 kDa	

## Applications

Applications testées: FC (Intra), IF	Contrôles positifs: IF : cellules HeLa,
Spécificité de l'espèce: Humain, rat, souris	

## Informations générales

UBE2C (Ubiquitin-conjugating enzyme E2 C) is also known as UBCH10 and belongs to the ubiquitin-conjugating enzyme family. It is highly expressed in a variety of human primary tumors, and it is able to promote cell proliferation and malignant transformation (PMID:18703417). UBE2C, along with the E3 ligase of the anaphase promoting complex (APC), catalyzes the ubiquitination of mitotic cyclins A and B, as well as securin. UBE2C is essential for cell cycle progression, and mutation of its active site cysteine confers a dominant-negative phenotype (PMID:17217624).

## Stockage

**Stockage:**  
Stocker à -20 °C. Éviter toute exposition à la lumière. Stable pendant un an après l'expédition.  
**Tampon de stockage:**  
PBS avec glycérol à 50 %, Proclin300 à 0,05 % et BSA à 0,5 %, pH 7,3.  
L'aliquotage n'est pas nécessaire pour le stockage à -20C

**\*\*\* Les 20ul contiennent 0,1% de BSA.**

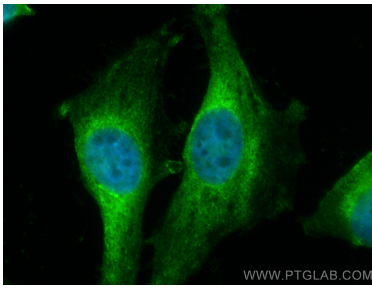
For technical support and original validation data for this product please contact:

T: 1 (888) 4PTGLAB (1-888-478-4522) (toll free  
in USA), or 1(312) 455-8498 (outside USA)

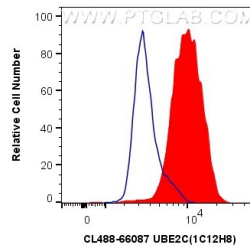
E: [proteintech@ptglab.com](mailto:proteintech@ptglab.com)  
W: [ptglab.com](http://ptglab.com)

**This product is exclusively available under Proteintech Group brand and is not available to purchase from any other manufacturer.**

## Données de validation sélectionnées



Immunofluorescent analysis of (4% PFA) fixed HeLa cells using CoraLite® Plus 488 UBE2C antibody (CL488-66087, Clone: 1C12H8) at dilution of 1:200.



1X10<sup>6</sup> HeLa cells were intracellularly stained with 0.4 ug CoraLite® Plus 488 Anti-Human UBE2C (CL488-66087, Clone:1C12H8) (red), or 0.4 ug Control Antibody. Cells were fixed and permeabilized with Transcription Factor Staining Buffer Kit (PF00011).