

À des fins de recherche uniquement

Anticorps Monoclonal anti-SMARCD1

Numéro de catalogue: CL488-66116



Informations de base

Numéro de catalogue: CL488-66116	Numéro d'acquisition GenBank: BC009368	Méthode de purification: Purification par protéine G
Taille: 100ul , Concentration: 1000 µg/ml by Nanodrop;	Identification du gène (NCBI): 6602	CloneNo.: 2F2G6
Hôte: Mouse	Nom complet: SWI/SNF related, matrix associated, actin dependent regulator of chromatin, subfamily d, member 1	Dilutions recommandées: WB 1:500-1:1000
Isotype: IgG1	MW calculé 58 kDa	Excitation/Emission maxima wavelengths: 493 nm / 522 nm
Immunogen Catalog Number: AG19100	MW observés: 58 kDa	

Applications

Applications testées: WB	Contrôles positifs: WB : cellules Jurkat,
Spécificité de l'espèce: Humain	

Informations générales

SMARCD1 (SWI/SNF related, matrix associated, actin dependent regulator of chromatin, subfamily d, member 1), also known as BAF60a (BRG1-associated factor 60A), Rsc6p or CRACD1, is a 476 amino acid protein that localizes to the nucleus and contains one SWIB domain. Expressed ubiquitously with notable expression in liver, brain, muscle, lung, kidney, pancreas and placenta, SMARCD1 functions as a component of the BAF complex and, in conjunction with a variety of other proteins, plays an essential role in chromatin remodeling. In addition, SMARCD1 influences vitamin D-mediated transcriptional activity and is thought to provide a link between the vitamin D receptor (VDR) and SWI/SNF chromatin remodeling complexes. Multiple isoforms of BAF60a exist due to alternative splicing events.

Stockage

Stockage:
Stocker à -20 °C. Éviter toute exposition à la lumière. Stable pendant un an après l'expédition.
Tampon de stockage:
PBS avec glycérol à 50 %, Proclin300 à 0,05 % et BSA à 0,5 %, pH 7,3.
L'aliquotage n'est pas nécessaire pour le stockage à -20C

*** Les 20ul contiennent 0,1% de BSA.

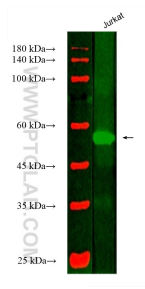
For technical support and original validation data for this product please contact:

T: 1 (888) 4PTGLAB (1-888-478-4522) (toll free
in USA), or 1(312) 455-8498 (outside USA)

E: proteintech@ptglab.com
W: ptglab.com

This product is exclusively available under Proteintech Group brand and is not available to purchase from any other manufacturer.

Données de validation sélectionnées



Various lysates were subjected to SDS PAGE followed by western blot with CL488-66116 (SMARCD1 antibody) at dilution of 1:500 incubated at room temperature for 1.5 hours.