

À des fins de recherche uniquement

Anticorps Monoclonal anti-Alpha-2-Macroglobulin



Numéro de catalogue: CL488-66126

Informations de base

Numéro de catalogue: CL488-66126	Numéro d'acquisition GenBank: BC040071	Méthode de purification: Purification par protéine A
Taille: 100ul , Concentration: 1000 µg/ml by 2 Nanodrop;	Identification du gène (NCBI): alpha-2-macroglobulin	CloneNo.: 4B11F7
Hôte: Mouse	Nom complet: alpha-2-macroglobulin	Dilutions recommandées: IF 1:50-1:500
Isotype: IgG2a	MW calculé 1474 aa, 163 kDa	Excitation/Emission maxima wavelengths: 493 nm / 522 nm
Immunogen Catalog Number: AG19245		

Applications

Applications testées: IF	Contrôles positifs: IF : cellules HepG2,
Spécificité de l'espèce: Humain	

Informations générales

alpha-2-macroglobulin, also known as α2-macroglobulin (α2M and A2M), is a protein abundant in the plasma of vertebrates and several invertebrates. A2M is an evolutionarily conserved arm of the innate immune system. It also mediates the proliferation of T cells and macrophages. A2M acts as a nonspecific protease inhibitor involved in the host defense mechanism that inactivates both endogenous and exogenous proteases, including trypsin, thrombin and collagenase. Even though A2M is produced predominantly by the liver, it may also be expressed in the reproductive tract, heart, and brain, and may have important roles in many physiological processes and medical illnesses including Alzheimer's disease.

Stockage

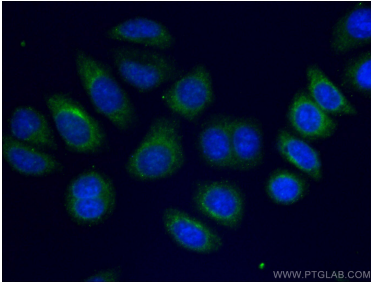
Stockage:
Stocker à -20 °C. Éviter toute exposition à la lumière. Stable pendant un an après l'expédition.
Tampon de stockage:
PBS avec glycérol à 50 %, Proclin300 à 0,05 % et BSA à 0,5 %, pH 7,3.
L'aliquotage n'est pas nécessaire pour le stockage à -20C

***** Les 20ul contiennent 0,1% de BSA.**

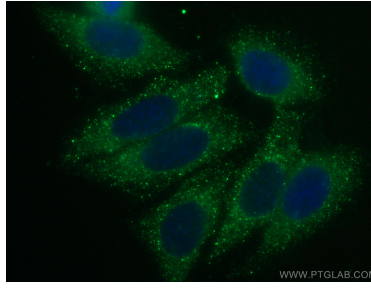
For technical support and original validation data for this product please contact:
T: 1 (888) 4PTGLAB (1-888-478-4522) (toll free in USA), or 1(312) 455-8498 (outside USA)
E: proteintech@ptglab.com
W: ptglab.com

This product is exclusively available under Proteintech Group brand and is not available to purchase from any other manufacturer.

Données de validation sélectionnées



Immunofluorescent analysis of (-20°C Ethanol) fixed HepG2 cells using CL488-66126 (Alpha-2-macroglobulin antibody) at dilution of 1:100.



Immunofluorescent analysis of (-20°C Ethanol) fixed HepG2 cells using CoraLite® Plus 488 Alpha-2-Macroglobulin antibody (CL488-66126, Clone: 4B11F7) at dilution of 1:200.