

À des fins de recherche uniquement

# Anticorps Monoclonal anti-Arginase-1



Numéro de catalogue: CL488-66129

2 Publications

## Informations de base

Numéro de catalogue: CL488-66129	Numéro d'acquisition GenBank: BC005321	Méthode de purification: Purification par protéine G
Taille: 100ul , Concentration: 1000 µg/ml by Nanodrop;	Identification du gène (NCBI): 383	CloneNo.: 5D6D12
Hôte: Mouse	Nom complet: arginase, liver	Dilutions recommandées: IF 1:50-1:500
Isotype: IgG1	MW calculé 236aa,25 kDa; 322aa,35 kDa	Excitation/Emission maxima wavelengths: 493 nm / 522 nm
Immunogen Catalog Number: AG8810		

## Applications

Applications testées: IF	Contrôles positifs: IF : cellules HepG2, cellules HeLa
Demandes citées: IF	
Spécificité de l'espèce: Humain, porc, rat, souris	
Espèces citées: souris	

## Informations générales

Arginase-1 (Liver arginase) belongs to the arginase family. ARG1 is a novel immunohistochemical marker of hepatocellular differentiation in fine needle aspiration cytology and a marker of hepatocytes and hepatocellular neoplasms. ARG1 is closely associated with alternative macrophage activation (PMID:12098359) and ARG1 has been shown to protect motor neurons from trophic factor deprivation and allow sensory neurons to overcome neurite outgrowth inhibition by myelin proteins (PMID: 20071539). It can exist as a homotrimer (PMID:16141327) and it has 3 isoforms produced by alternative splicing. Defects in ARG1 are the cause of argininemia (ARGIN). Deletion or TNF-mediated restriction of ARG1 unleashes the production of NO by NOS2, which is critical for pathogen control. (PMID:27117406). ARG1 is a novel biomarker of post-stroke immune suppression (2016). The antibody is conjugated with CL488, Ex/Em 488 nm/515 nm.

## Publications notables

Autrice	Pubmed ID	Journal	Application
Kirsten M Reeves	34615724	Clin Cancer Res	IF
Weihao Shi	33969376	Biosci Rep	IF

## Stockage

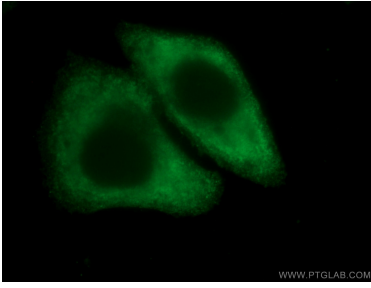
**Stockage:**  
Stocker à -20°C. Éviter toute exposition à la lumière. Stable pendant un an après l'expédition.  
**Tampon de stockage:**  
PBS avec glycérol à 50 %, Proclin300 à 0,05 % et BSA à 0,5 %, pH 7,3.  
L'aliquotage n'est pas nécessaire pour le stockage à -20C

\*\*\* Les 20ul contiennent 0,1% de BSA.

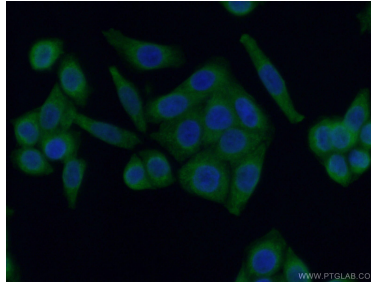
For technical support and original validation data for this product please contact:  
T: 1 (888) 4PTGLAB (1-888-478-4522) (toll free in USA), or 1(312) 455-8498 (outside USA)  
E: proteintech@ptglab.com  
W: ptglab.com

This product is exclusively available under Proteintech Group brand and is not available to purchase from any other manufacturer.

## Données de validation sélectionnées



Immunofluorescent analysis of (-20°C Ethanol) fixed HepG2 cells using CL488-66129 (ARG1 antibody) at dilution of 1:50.



Immunofluorescent analysis of (-20°C Ethanol) fixed HeLa cells using CL488-66129 (ARG1 antibody) at dilution of 1:50.