

À des fins de recherche uniquement

Anticorps Monoclonal anti-NSE

Numéro de catalogue: CL488-66150



Informations de base

Numéro de catalogue: CL488-66150	Numéro d'acquisition GenBank: BC002745	Méthode de purification: Purification par protéine G
Taille: 100ul , Concentration: 1000 µg/ml by Nanodrop;	Identification du gène (NCBI): 2026	CloneNo.: 6F8G3
Hôte: Mouse	Nom complet: enolase 2 (gamma, neuronal)	Dilutions recommandées: IF 1:50-1:500
Isotype: IgG1	MW calculé 47 kDa	Excitation/Emission maxima wavelengths: 493 nm / 522 nm
Immunogen Catalog Number: AG19106	MW observés: 47 kDa	

Applications

Applications testées: FC (Intra), IF	Contrôles positifs: IF : tissu cérébral de souris,
Spécificité de l'espèce: Humain, porc, rat, souris	

Informations générales

NSE, also named as ENO2, belongs to the enolase family. Enolases are cytoplasmic glycolytic enzymes that may be involved in differentiation. The enolase has three isoenzymes, alpha, beta and gamma. The alpha form is expressed in most tissues, whereas the beta form is expressed in muscle tissue. The gamma enolase (ENO2), a homodimer, is primarily localized in neurons and neuroendocrine cells and is a cancer diagnostic marker for brain tumors (PMID:7520111). ENO2 plays a role in the glycolysis-related energy pathway and might be involved in higher metabolic activity during the day than at night, at least in part. And this antibody is conjugated with CL488, Ex/Em 488 nm/515 nm.

Stockage

Stockage:
Stocker à -20 °C. Éviter toute exposition à la lumière. Stable pendant un an après l'expédition.
Tampon de stockage:
PBS avec glycérol à 50 %, Proclin300 à 0,05 % et BSA à 0,5 %, pH 7,3.
L'aliquotage n'est pas nécessaire pour le stockage à -20C

***** Les 20ul contiennent 0,1% de BSA.**

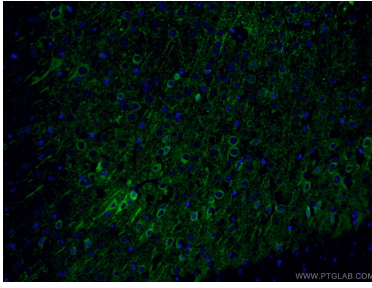
For technical support and original validation data for this product please contact:

T: 1 (888) 4PTGLAB (1-888-478-4522) (toll free
in USA), or 1(312) 455-8498 (outside USA)

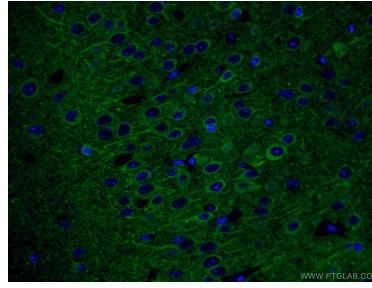
E: proteintech@ptglab.com
W: ptglab.com

This product is exclusively available under Proteintech Group brand and is not available to purchase from any other manufacturer.

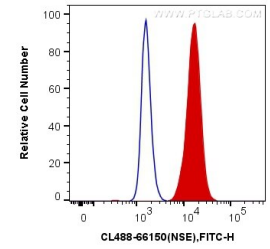
Données de validation sélectionnées



Immunofluorescent analysis of (4% PFA) fixed mouse brain tissue using CL488-66150 (NSE antibody) at dilution of 1:50.



Immunofluorescent analysis of (4% PFA) fixed mouse brain tissue using CL488-66150 (NSE antibody) at dilution of 1:50.



1×10^6 SH-SY5Y cells were intracellularly stained with 0.4 μ g CoraLite® Plus 488 Anti-Human NSE (CL488-66150, Clone:6F8G3) (red), or 0.4 μ g Mouse IgG1 Isotype Control (CL488-66360, Clone:T1F8D3F10) (blue). Cells were fixed with 4% PFA and permeabilized with Flow Cytometry Perm Buffer (PF00011-C).