

À des fins de recherche uniquement

Anticorps Monoclonal anti-C3/C3b/C3c



Numéro de catalogue: CL488-66157

Informations de base

Numéro de catalogue: CL488-66157	Numéro d'acquisition GenBank: BC150179	Méthode de purification: Purification par protéine G
Taille: 100ul, Concentration: 1000 µg/ml by Nanodrop;	Identification du gène (NCBI): 718	CloneNo.: 2A6B3
Hôte: Mouse	Nom complet: complement component 3	Dilutions recommandées: IF 1:50-1:500
Isotype: IgG1	MW calculé 1663 aa, 187 kDa	Excitation/Emission maxima wavelengths: 493 nm / 522 nm
Immunogen Catalog Number: AG15955	MW observés: 115 kDa	

Applications

Applications testées: IF	Contrôles positifs: IF : cellules HepG2,
Spécificité de l'espèce: Humain	

Informations générales

The complement system is an important effector which bridges the innate and adaptive immune systems (PMID: 20010915). The third component of complement, C3, plays a central role in the activation of the complement system. Its processing by C3 convertase is the central reaction in both classical and alternative complement pathways (PMID: 11414361). Human C3, composed of α and β chains (115 and 75 kDa, respectively), is cleaved into C3a and C3b by C3 convertase. C3b is further cleaved into iC3b, C3c, C3dg and C3f. This antibody raised against 1314-1663 aa of human C3 protein recognize C3 alpha chain, C3b alpha' chain, and C3c alpha' chain fragment 2.

Stockage

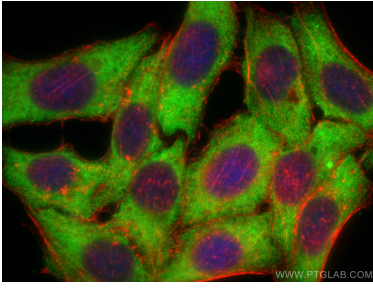
Stockage:
Stocker à -20 °C. Éviter toute exposition à la lumière. Stable pendant un an après l'expédition.
Tampon de stockage:
PBS avec glycérol à 50 %, Proclin300 à 0,05 % et BSA à 0,5 %, pH 7,3.
L'aliquotage n'est pas nécessaire pour le stockage à -20C

***** Les 20ul contiennent 0,1% de BSA.**

For technical support and original validation data for this product please contact:
T: 1 (888) 4PTGLAB (1-888-478-4522) (toll free in USA), or 1(312) 455-8498 (outside USA)
E: proteintech@ptglab.com
W: ptglab.com

This product is exclusively available under Proteintech Group brand and is not available to purchase from any other manufacturer.

Données de validation sélectionnées



Immunofluorescent analysis of (-20°C Ethanol)
fixed HepG2 cells using CoraLite® Plus 488
C3/C3b/C3c antibody (CL488-66157, Clone: 2A6B3
) at dilution of 1:200, CL594-phalloidin (red).