

À des fins de recherche uniquement

# Anticorps Monoclonal anti-Caspase 9/p35/p10



Numéro de catalogue: **CL488-66169**

## Informations de base

Numéro de catalogue:	CL488-66169	Numéro d'acquisition GenBank:	BC002452	Méthode de purification:	Purification par protéine A
Taille:	100ul , Concentration: 1000 µg/ml by Nanodrop;	Identification du gène (NCBI):	842	CloneNo.:	1B7G2
Hôte:	Mouse	Nom complet:	caspase 9, apoptosis-related cysteine peptidase	Dilutions recommandées:	IF 1:50-1:500
Isotype:	IgG2b	MW calculé	46 kDa	Excitation/Emission maxima wavelengths:	493 nm / 522 nm
Immunogen Catalog Number:	AG20813	MW observés:	46 kDa, 35 kDa		

## Applications

Applications testées:

FC (Intra), IF

Spécificité de l'espèce:

Humain, souris

Contrôles positifs:

IF : cellules HeLa,

## Informations générales

Caspase 9, apoptosis-related cysteine protease (CASP9, synonyms: MCH6, APAF3, APAF-3, ICE-LAP6, CASPASE-9c) is a member of the cysteine-aspartic acid protease (caspase) family. Sequential activation of caspases plays a central role in the execution-phase of cell apoptosis. Caspases exist as inactive proenzymes which undergo proteolytic processing at conserved aspartic residues to produce 2 subunits, large and small, that dimerize to form the active enzyme. Caspase 9 is processed by caspase APAF1; this step is thought to be one of the earliest in the caspase activation cascade.

## Stockage

Stockage:

Stocker à -20 °C. Éviter toute exposition à la lumière. Stable pendant un an après l'expédition.

Tampon de stockage:

PBS avec glycérol à 50 %, Proclin300 à 0,05 % et BSA à 0,5 %, pH 7,3.

L'aliquotage n'est pas nécessaire pour le stockage à -20C

**\*\*\* Les 20ul contiennent 0,1% de BSA.**

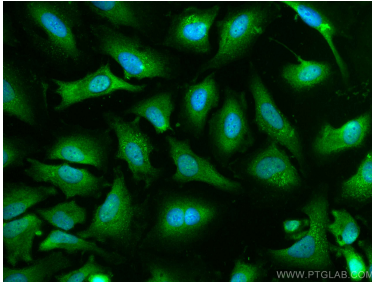
For technical support and original validation data for this product please contact:

T: 1 (888) 4PTGLAB (1-888-478-4522) (toll free in USA), or 1(312) 455-8498 (outside USA)

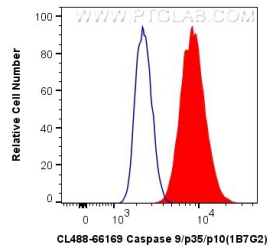
E: [proteintech@ptglab.com](mailto:proteintech@ptglab.com)  
W: [ptglab.com](http://ptglab.com)

**This product is exclusively available under Proteintech Group brand and is not available to purchase from any other manufacturer.**

## Données de validation sélectionnées



Immunofluorescent analysis of (-20°C Ethanol) fixed HeLa cells using CoraLite® Plus 488 Caspase 9/p35/p10 antibody (CL488-66169, Clone: 1B7G2) at dilution of 1:200.



1X10<sup>6</sup> HepG2 cells were intracellularly stained with 0.4 ug CoraLite® Plus 488 Anti-Human Caspase 9/p35/p10 (CL488-66169, Clone:1B7G2) (red), or 0.4 ug Mouse IgG2b Isotype Control (CL488-66360-3, Clone: K11B8C4B5) (blue). Cells were fixed with 4% PFA and permeabilized with Flow Cytometry Perm Buffer (PF00011-C).