

À des fins de recherche uniquement

Anticorps Monoclonal anti-ERK1/2

Numéro de catalogue: CL488-66192



Informations de base

| | | |
|--|--|---|
| Numéro de catalogue: CL488-66192 | Numéro d'acquisition GenBank: BC013992 | Méthode de purification: Purification par protéine G |
| Taille: 100ul , Concentration: 1000 µg/ml by Nanodrop; | Identification du gène (NCBI): 5595 | CloneNo.: 4G8A11 |
| Hôte: Mouse | Nom complet: mitogen-activated protein kinase 3 | Dilutions recommandées: IF 1:50-1:500 |
| Isotype: IgG1 | MW calculé 43 kDa | Excitation/Emission maxima wavelengths: 493 nm / 522 nm |
| Immunogen Catalog Number: AG20350 | | |

Applications

| | |
|--|--|
| Applications testées: FC (Intra), IF | Contrôles positifs: IF : cellules HeLa, |
| Spécificité de l'espèce: Humain, souris | |

Informations générales

ERK1 and ERK2 belongs to the protein kinase superfamily. It is involved in both the initiation and regulation of meiosis, mitosis, and postmitotic functions in differentiated cells by phosphorylating a number of transcription factors such as ELK-1. ERK1/2 catalized the reaction: ATP + a protein = ADP + a phosphoprotein. It is activated by tyrosine phosphorylation in response to INS and NGF. The antibody is conjugated with CL488, Ex/Em 488 nm/515 nm.

Stockage

Stockage:
Stocker à -20 °C. Éviter toute exposition à la lumière. Stable pendant un an après l'expédition.
Tampon de stockage:
PBS avec glycérol à 50 %, Proclin300 à 0,05 % et BSA à 0,5 %, pH 7,3.
L'aliquotage n'est pas nécessaire pour le stockage à -20C

***** Les 20ul contiennent 0,1% de BSA.**

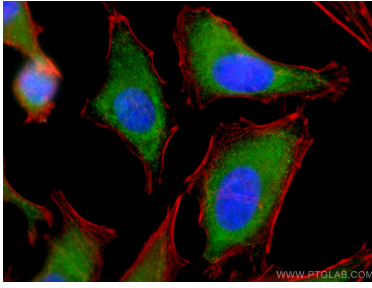
For technical support and original validation data for this product please contact:

T: 1 (888) 4PTGLAB (1-888-478-4522) (toll free
in USA), or 1(312) 455-8498 (outside USA)

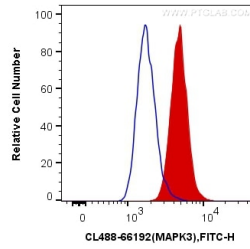
E: proteintech@ptglab.com
W: ptglab.com

This product is exclusively available under Proteintech Group brand and is not available to purchase from any other manufacturer.

Données de validation sélectionnées



Immunofluorescent analysis of (-20°C Ethanol) fixed HeLa cells using CoraLite® Plus 488 ERK1/2 antibody (CL488-66192, Clone: 4G8A11) at dilution of 1:100, (CL594-Phalloidin, red).



1X10⁶ HepG2 cells were intracellularly stained with 0.4 ug CoraLite® Plus 488 Anti-Human ERK1/2 (CL488-66192, Clone:4G8A11) (red), or 0.4 ug Mouse IgG1 Isotype Control (CL488-66360, Clone: T1F8D3F10) (blue). Cells were fixed with 4% PFA and permeabilized with Flow Cytometry Perm Buffer (PF00011-C).