

À des fins de recherche uniquement

# Anticorps Monoclonal anti-INS

Numéro de catalogue: CL488-66198



## Informations de base

Numéro de catalogue: CL488-66198	Numéro d'acquisition GenBank: BC005255	Méthode de purification: Purification par protéine A
Taille: 100ul, Concentration: 1000 µg/ml by Nanodrop;	Identification du gène (NCBI): 3630	CloneNo.: 4B6A7
Hôte: Mouse	Nom complet: INS	Dilutions recommandées: IF 1:200-1:800
Isotype: IgG2a	MW calculé 110 aa, 12 kDa	Excitation/Emission maxima wavelengths: 493 nm / 522 nm
Immunogen Catalog Number: AG8630		

## Applications

Applications testées: IF	Contrôles positifs: IF : tissu pancréatique de souris,
Spécificité de l'espèce: Humain, rat, souris	

## Informations générales

INS is a peptide hormone, produced by beta cells of the pancreas, and is central to regulating carbohydrate and fat metabolism in the body. It participates in glucose utilization, protein synthesis and in the formation and storage of neutral lipids. It is synthesized as a precursor molecule, which is processed prior to secretion. A- and B-peptides are joined together by a disulfide bond to form INS, while the central portion of the precursor molecule is cleaved and released as the C-peptide. Defects in INS results in type 1 diabetes mellitus. INS may also exist 36 kDa form corresponding to the hexameric INS form.

## Stockage

**Stockage:**  
Stocker à -20 °C. Éviter toute exposition à la lumière. Stable pendant un an après l'expédition.  
**Tampon de stockage:**  
PBS avec glycérol à 50 %, Proclin300 à 0,05 % et BSA à 0,5 %, pH 7,3.  
L'aliquotage n'est pas nécessaire pour le stockage à -20C

**\*\*\* Les 20ul contiennent 0,1% de BSA.**

For technical support and original validation data for this product please contact:

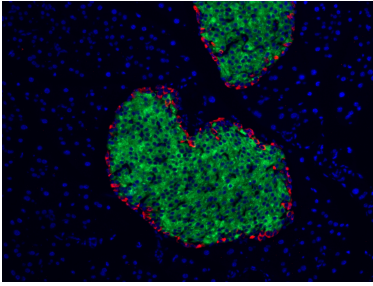
T: 1 (888) 4PTGLAB (1-888-478-4522) (toll free  
in USA), or 1(312) 455-8498 (outside USA)

E: [proteintech@ptglab.com](mailto:proteintech@ptglab.com)  
W: [ptglab.com](http://ptglab.com)

**This product is exclusively available under Proteintech Group brand and is not available to purchase from any other manufacturer.**

---

## Données de validation sélectionnées



Immunofluorescent analysis of (4% PFA) fixed mouse pancreas tissue using the CoraLite® Plus 488-conjugated version of this antibody, CL488-66198 (INS antibody), at dilution of 1:400. The  $\alpha$  cells of pancreas was labelled in red with 15954-1-AP (Glucagon antibody).