

À des fins de recherche uniquement

Anticorps Monoclonal anti-acetylated Tubulin(Lys40)



Numéro de catalogue: CL488-66200

2 Publications

Informations de base

Numéro de catalogue: CL488-66200	Numéro d'acquisition GenBank: NM_006009	Méthode de purification: Purification par protéine G
Taille: 100ul , Concentration: 1000 µg/ml by Nanodrop and 1000 µg/ml by Bradford method using BSA as the standard;	Identification du gène (NCBI): 7846	CloneNo.: 7E5H8
Hôte: Mouse	Nom complet: tubulin, alpha 1a	Dilutions recommandées: IF 1:50-1:500
Isotype: IgG1	MW calculé 52 kDa	Excitation/Emission maxima wavelengths: 493 nm / 522 nm

Applications

Applications testées: IF	Contrôles positifs: IF : cellules MDCK, tissu rénal de souris
Demandes citées: IF	
Spécificité de l'espèce: canin, Humain, porc, rat, souris	
Espèces citées: Humain	

Informations générales

Tubulin, composed of heterodimers of alpha and beta tubulin, is the mainly component of microtubules which play important roles in cell motility, mitosis, and intracellular vesicle transport. Both alpha and beta tubulin undergo several posttranslational modifications such as polyglutamylolation and acetylation/deacetylation. Tubulin acetylation occurs on lysine-40 at the N-terminal of alpha tubulin and is conserved across species. The histone deacetylase HDAC6 and SIRT2 has been identified as tubulin deacetylases. Reversible acetylation of alpha tubulin may be implicated in regulating microtubule stability, cell motility, and axon regeneration. The level of acetylated tubulin has been linked to epithelial malignancies and sensitivity to chemotherapy. In addition, acetylated tubulin has been widely used as a marker for primary cilia. This antibody is specific to the acetylated tubulin; it does not recognize non-acetylated tubulin. (24268707, 23881549). This antibody is conjugated with CL488, Ex/Em 488 nm/515 nm.

Publications notables

Autrice	Pubmed ID	Journal	Application
Vincent Manna	34585152	STAR Protoc	IF
Vincent J Manna	35187520	BBA Adv	IF

Stockage

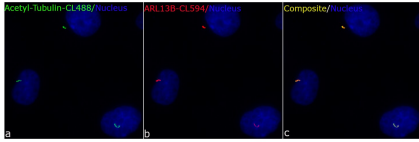
Stockage:
Stocker à -20°C. Éviter toute exposition à la lumière. Stable pendant un an après l'expédition.
Tampon de stockage:
PBS avec glycérol à 50 %, Proclin300 à 0,05 % et BSA à 0,5 %, pH 7,3.
L'aliquotage n'est pas nécessaire pour le stockage à -20C

*** Les 20ul contiennent 0,1% de BSA.

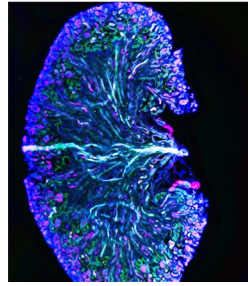
For technical support and original validation data for this product please contact:
T: 1 (888) 4PTGLAB (1-888-478-4522) (toll free in USA), or 1(312) 455-8498 (outside USA)
E: proteintech@ptglab.com
W: ptglab.com

This product is exclusively available under Proteintech Group brand and is not available to purchase from any other manufacturer.

Données de validation sélectionnées



Immunofluorescent analysis of (4% PFA) fixed MDCK cells using CL488-66200 (GREEN, acetylated Tubulin(Lys40) antibody) at dilution of 1:50 and CL594-17711 (RED, ARL13B antibody) at dilution of 1:50.



Frozen tissue section of adult mouse kidney was stained for acetylated α -tubulin (magenta, Cat. No CL488-66200), CD-31/PECAM-1 (white), and Shh (green, Cat. No 20697-1-AP) with DAPI as a counterstain for visualizing the nucleus (blue). acetylated α -tubulin stains primary cilia and was conjugated to Coralite-488 fluorescent dye and pseudocolored to magenta. CD-31 stains endocardial/endothelial cells and was visualized with an Alexa Fluor 647 secondary

