

À des fins de recherche uniquement

Anticorps Monoclonal anti-Myoglobin



Numéro de catalogue: CL488-66205

Informations de base

Numéro de catalogue: CL488-66205	Numéro d'acquisition GenBank: BC014547	Méthode de purification: Purification par protéine G
Taille: 100ul , Concentration: 1000 µg/ml by Nanodrop;	Identification du gène (NCBI): 4151	CloneNo.: 1A4F7
Hôte: Mouse	Nom complet: myoglobin	Excitation/Emission maxima wavelengths: 493 nm / 522 nm
Isotype: IgG1	MW calculé 154 aa, 17 kDa	
Immunogen Catalog Number: AG8979	MW observés: 17-18 kDa	

Applications

Applications testées:
FC (Intra)
Spécificité de l'espèce:
Humain, rat

Informations générales

Myoglobin is a cytoplasmic hemoprotein that is expressed primarily in cardiomyocytes and oxidative skeletal muscle fibers, functioning on facilitating oxygen transport and modulating nitric oxide homeostasis within cardiac and skeletal myocytes. Recent studies indicated that myoglobin was also expressed in non-muscle tissues. This antibody well recognized endogenous myoglobin in muscle lysates.

Stockage

Stockage:
Stocker à -20 °C. Éviter toute exposition à la lumière. Stable pendant un an après l'expédition.
Tampon de stockage:
PBS avec glycérol à 50 %, Proclin300 à 0,05 % et BSA à 0,5 %, pH 7,3.
L'aliquotage n'est pas nécessaire pour le stockage à -20C

*** Les 20ul contiennent 0,1% de BSA.

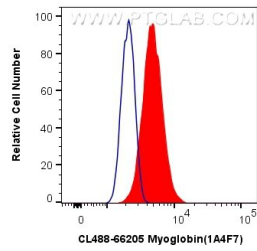
For technical support and original validation data for this product please contact:

T: 1 (888) 4PTGLAB (1-888-478-4522) (toll free
in USA), or 1(312) 455-8498 (outside USA)

E: proteintech@ptglab.com
W: ptglab.com

This product is exclusively available under Proteintech Group brand and is not available to purchase from any other manufacturer.

Données de validation sélectionnées



1X10⁶ C2C12 cells were intracellularly stained with 0.8 ug CoraLite® Plus 488 Anti-Human Myoglobin (CL488-66205, Clone:1A4F7) (red), or 0.8 ug Control Antibody. Cells were fixed with 4% PFA and permeabilized with Flow Cytometry Perm Buffer (PF00011-C).