

À des fins de recherche uniquement

Anticorps Monoclonal anti-Apolipoprotein A1

Numéro de catalogue: CL488-66206



Informations de base

Numéro de catalogue: CL488-66206	Numéro d'acquisition GenBank: BC005380	Méthode de purification: Purification par protéine A
Taille: 100ul , Concentration: 1000 µg/ml by Nanodrop;	Identification du gène (NCBI): 335	CloneNo.: 1C9G5
Hôte: Mouse	Nom complet: apolipoprotein A-I	Dilutions recommandées: IF 1:50-1:500
Isotype: IgG2b	MW calculé 31 kDa	Excitation/Emission maxima wavelengths: 493 nm / 522 nm
Immunogen Catalog Number: AG21920	MW observés: 26-28 kDa	

Applications

Applications testées: IF	Contrôles positifs: IF : cellules HepG2, cellules LO2
Spécificité de l'espèce: Humain, souris	

Informations générales

ApoA1 is a major protein component of high density lipoproteins (HDL) which is associated with reversed cholesterol transport, lipid/cholesterol binding, lecithin/cholesterol acyltransferase (LCAT) activation and specific receptors binding. It is synthesized in the liver and small intestine. Defects of ApoA1 cause low HDL level and systemic non-neuropathic amyloidosis. Serum concentration of ApoA1 is inversely related to the risk of developing atherosclerosis. This antibody was generated against the C-terminal region of human ApoA1.

Stockage

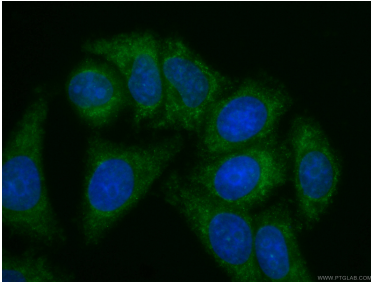
Stockage:
Stocker à -20 °C. Éviter toute exposition à la lumière. Stable pendant un an après l'expédition.
Tampon de stockage:
PBS avec glycérol à 50 %, Proclin300 à 0,05 % et BSA à 0,5 %, pH 7,3.
L'aliquotage n'est pas nécessaire pour le stockage à -20C

***** Les 20ul contiennent 0,1% de BSA.**

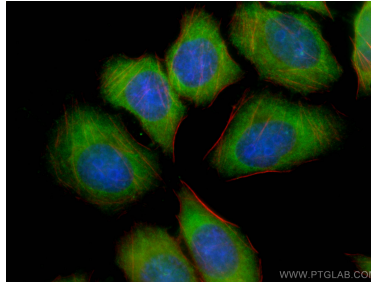
For technical support and original validation data for this product please contact:
T: 1 (888) 4PTGLAB (1-888-478-4522) (toll free in USA), or 1(312) 455-8498 (outside USA) E: proteintech@ptglab.com W: ptglab.com

This product is exclusively available under Proteintech Group brand and is not available to purchase from any other manufacturer.

Données de validation sélectionnées



Immunofluorescent analysis of (-20°C Ethanol) fixed HepG2 cells using CL488-66206 (Apolipoprotein AI antibody) at dilution of 1:100.



Immunofluorescent analysis of (-20°C Ethanol) fixed LO2 cells using CoraLite® Plus 488-conjugated Apolipoprotein AI antibody (CL488-66206, Clone: 1C9G5) at dilution of 1:100, CL594-Phalloidin (red).