

À des fins de recherche uniquement

Anticorps Monoclonal anti-CD13

Numéro de catalogue: **CL488-66211**



Informations de base

Numéro de catalogue: CL488-66211	Numéro d'acquisition GenBank: BC058928	Méthode de purification: Purification par protéine A
Taille: 100ul , Concentration: 1000 µg/ml by Nanodrop;	Identification du gène (NCBI): 290	CloneNo.: 2D8D11
Hôte: Mouse	Nom complet: alanyl (membrane) aminopeptidase	Dilutions recommandées: IF 1:50-1:500
Isotype: IgG2a	MW calculé 110 kDa	Excitation/Emission maxima wavelengths: 491 nm / 516 nm
Immunogen Catalog Number: AG5976		

Applications

Applications testées: FC (Intra), IF	Contrôles positifs: IF : tissu rénal humain,
Spécificité de l'espèce: Humain	

Informations générales

CD13, also named as APN, ANPEP(aminopeptidase N) or PEPN, is a heavily glycosylated, ~150-240 kDa, type-II membrane, expressed by most cells of myeloid origin including monocytes, macrophages, granulocytes, and their hematopoietic precursors. It is also abundantly expressed in the brush border of epithelial cells from renal proximal tubules and small intestine, in prostatic epithelial cells, in bile duct canaliculi, in mast cells, and, in some cases, in fibroblasts and smooth muscle cells. CD13 is a multifunctional protein and plays varying roles in cell migration, cell proliferation, cell differentiation and so on. CD13 participates in angiogenesis generating and modulating angiogenic signals, and can be a marker of angiogenic vessels. CD13 is also a pan-myeloid marker, present on mature granulocytes and monocytes. (PMID: 8805662, 10098327, 18603472, 18097955, 17897790, 17888402, 21339174) And this antibody is conjugated with CL488(Ex/Em 488 nm/515 nm).

Stockage

Stockage:
Stocker à -20 °C. Éviter toute exposition à la lumière. Stable pendant un an après l'expédition.
Tampon de stockage:
PBS avec glycérol à 50 %, Proclin300 à 0,05 % et BSA à 0,5 %, pH 7,3.
L'aliquotage n'est pas nécessaire pour le stockage à -20C

***** Les 20ul contiennent 0,1% de BSA.**

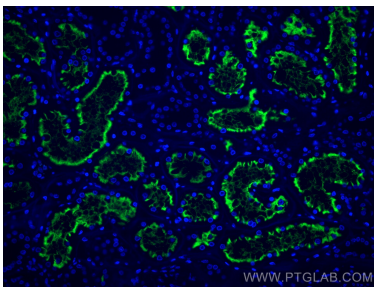
For technical support and original validation data for this product please contact:

T: 1 (888) 4PTGLAB (1-888-478-4522) (toll free
in USA), or 1(312) 455-8498 (outside USA)

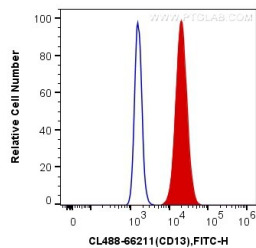
E: proteintech@ptglab.com
W: ptglab.com

This product is exclusively available under Proteintech Group brand and is not available to purchase from any other manufacturer.

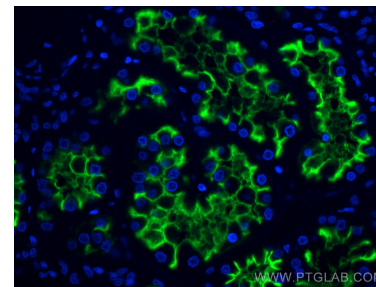
Données de validation sélectionnées



Immunofluorescent analysis of (4% PFA) fixed human kidney tissue using CoraLite®488 CD13 antibody (CL488-66211, Clone: 2D8D11) at dilution of 1:200.



1X10⁶ U-937 cells were intracellularly stained with 0.4 ug CoraLite®488 Anti-Human CD13 (CL488-66211, Clone:2D8D11) (red), or 0.4 ug Mouse IgG2a Isotype Control (CL488-66360-2, Clone: K11A1B2A2) (blue). Cells were fixed with 4% PFA and permeabilized with Flow Cytometry Perm Buffer (PF00011-C).



Immunofluorescent analysis of (4% PFA) fixed human kidney tissue using CoraLite®488 CD13 antibody (CL488-66211, Clone: 2D8D11) at dilution of 1:200.