

À des fins de recherche uniquement

# Anticorps Monoclonal anti-APOD

Numéro de catalogue: CL488-66215



## Informations de base

Numéro de catalogue:	CL488-66215	Numéro d'acquisition GenBank:	BC007402	Méthode de purification:	Purification par protéine G
Taille:	100ul , Concentration: 1000 µg/ml by Nanodrop;	Identification du gène (NCBI):	347	CloneNo.:	1C6D10
Hôte:	Mouse	Nom complet:	apolipoprotein D	Dilutions recommandées:	IF 1:50-1:500
Isotype:	IgG1	MW calculé:	33 kDa	Excitation/Emission maxima wavelengths:	493 nm / 522 nm
Immunogen Catalog Number:	AG21422	MW observés:	30-33 kDa		

## Applications

Applications testées:	FC (Intra), IF	Contrôles positifs:	IF : cellules HeLa,
Spécificité de l'espèce:	Humain		

## Informations générales

Apolipoprotein D (ApoD) is a member of the lipocalin superfamily of ligand transporters, and has been implicated in the transport of small hydrophobic molecules. ApoD is also a component of plasma high-density lipoproteins (HDL). Alteration of ApoD expression has been linked to multiple neurological disorders, including Alzheimer's disease.

## Stockage

**Stockage:**  
Stocker à -20 °C. Éviter toute exposition à la lumière. Stable pendant un an après l'expédition.  
**Tampon de stockage:**  
PBS avec glycérol à 50 %, Proclin300 à 0,05 % et BSA à 0,5 %, pH 7,3.  
L'aliquotage n'est pas nécessaire pour le stockage à -20C

**\*\*\* Les 20ul contiennent 0,1% de BSA.**

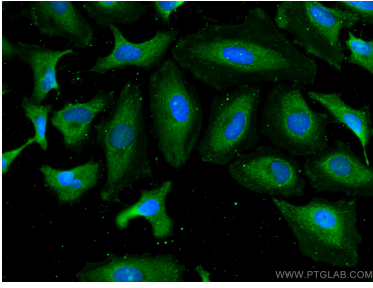
For technical support and original validation data for this product please contact:

T: 1 (888) 4PTGLAB (1-888-478-4522) (toll free in USA), or 1(312) 455-8498 (outside USA)

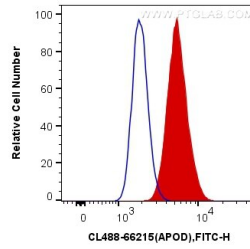
E: [proteintech@ptglab.com](mailto:proteintech@ptglab.com)  
W: [ptglab.com](http://ptglab.com)

**This product is exclusively available under Proteintech Group brand and is not available to purchase from any other manufacturer.**

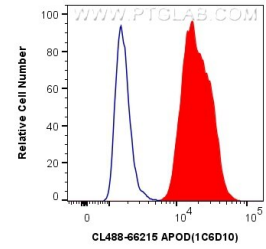
## Données de validation sélectionnées



Immunofluorescent analysis of (-20°C Ethanol) fixed HeLa cells using CoraLite® Plus 488 APOD antibody (CL488-66215, Clone: 1C6D10) at dilution of 1:200.



1X10<sup>6</sup> HepG2 cells were intracellularly stained with 0.4 ug CoraLite® Plus 488 Anti-Human APOD (CL488-66215, Clone:1C6D10) (red), or 0.4 ug Control Antibody. Cells were fixed with 4% PFA and permeabilized with Flow Cytometry Perm Buffer (PF00011-C).



1X10<sup>6</sup> HepG2 cells were intracellularly stained with 0.8 ug CoraLite® Plus 488 Anti-Human APOD (CL488-66215, Clone:1C6D10) (red), or 0.8 ug CoraLite® Plus 488 Mouse IgG1 Isotype Control (MOPC-21) (CL488-65124, Clone: MOPC-21) (blue). Cells were fixed with 4% PFA and permeabilized with Flow Cytometry Perm Buffer (PF00011-C).