

À des fins de recherche uniquement

# Anticorps Monoclonal anti-Beta Tubulin



Numéro de catalogue: CL488-66240

8 Publications

## Informations de base

Numéro de catalogue: CL488-66240	Numéro d'acquisition GenBank: BC000748	Méthode de purification: Purification par protéine A
Taille: 100ul, Concentration: 1000 µg/ml by Nanodrop;	Identification du gène (NCBI): 10381	CloneNo.: 1D4A4
Hôte: Mouse	Nom complet: tubulin, beta 3	Dilutions recommandées: WB 1:2000-1:10000 IF 1:50-1:500
Isotype: IgG2a	MW calculé 450 aa, 50 kDa	Excitation/Emission maxima wavelengths: 493 nm / 522 nm
Immunogen Catalog Number: AG0117		

## Applications

Applications testées: FC (Intra), IF, WB	Contrôles positifs:
Demandes citées: IF, WB	WB : cellules HeLa, cellules HEK-293, cellules HSC-T6, cellules NIH/3T3
Spécificité de l'espèce: Humain, namatode, poisson-zèbre, porc, rat, souris	IF : cellules HepG2,
Espèces citées: Humain, rat, souris	

## Informations générales

There are five tubulins in human cells: alpha, beta, gamma, delta, and epsilon. Tubulins are conserved across species. They form heterodimers, which multimerize to form a microtubule filament. An alpha and beta tubulin heterodimer is the basic structural unit of microtubules. The heterodimer does not come apart, once formed. The alpha and beta tubulins, which are each about 55 kDa MW, are homologous but not identical. Alpha and beta tubulins have been widely used as loading controls. Tubulin expression may vary according to resistance to antimicrobial and antimetabolic drugs.

## Publications notables

Autrice	Pubmed ID	Journal	Application
Maria Czarnek	34703654	Mol Ther Nucleic Acids	IF
Xiaomin Tang	34869338	Front Cell Dev Biol	IF
Gaojian Zhang	35372814	iScience	WB

## Stockage

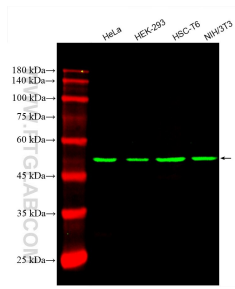
Stockage:  
Stocker à -20 °C. Éviter toute exposition à la lumière. Stable pendant un an après l'expédition.  
Tampon de stockage:  
PBS avec glycérol à 50 %, Proclin300 à 0,05 % et BSA à 0,5 %, pH 7,3.  
L'aliquotage n'est pas nécessaire pour le stockage à -20C

\*\*\* Les 20ul contiennent 0,1% de BSA.

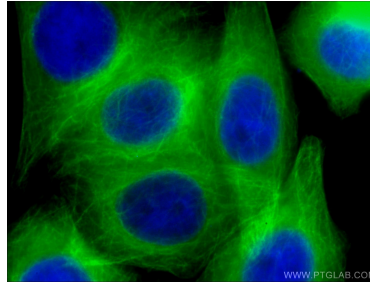
For technical support and original validation data for this product please contact:  
T: 1 (888) 4PTGLAB (1-888-478-4522) (toll free in USA), or 1(312) 455-8498 (outside USA)  
E: proteintech@ptglab.com  
W: ptglab.com

This product is exclusively available under Proteintech Group brand and is not available to purchase from any other manufacturer.

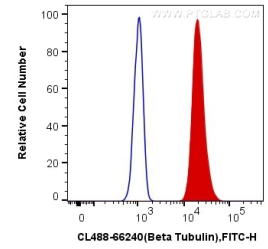
## Données de validation sélectionnées



Various lysates were subjected to SDS PAGE followed by western blot with CL488-66240 (Beta Tubulin antibody) at dilution of 1:5000 incubated at room temperature for 1.5 hours.



Immunofluorescent analysis of (4% PFA) fixed HepG2 cells using CL488-66240 (beta Tubulin antibody) at dilution of 1:100.



1X10<sup>6</sup> HeLa cells were intracellularly stained with 0.4 ug CoraLite® Plus 488 Anti-Human Beta Tubulin (CL488-66240, Clone:1D4A4) (red), or 0.4 ug Mouse IgG2a Isotype Control (CL488-66360-2, Clone: K11A1B2A2) (blue). Cells were fixed with 4% PFA and permeabilized with Flow Cytometry Perm Buffer (PF00011-C).