

À des fins de recherche uniquement

Anticorps Monoclonal anti-CRP

Numéro de catalogue: CL488-66250



Informations de base

Numéro de catalogue: CL488-66250	Numéro d'acquisition GenBank: BC020766	Méthode de purification: Purification par protéine A
Taille: 100ul , Concentration: 1000 µg/ml by Nanodrop;	Identification du gène (NCBI): 1401	CloneNo.: 3F10A11
Hôte: Mouse	Nom complet: C-reactive protein, pentraxin-related	Dilutions recommandées: IF 1:50-1:500
Isotype: IgG2a	MW calculé 224 aa, 25 kDa	Excitation/Emission maxima wavelengths: 493 nm / 522 nm
Immunogen Catalog Number: AG9883	MW observés: 27 kDa	

Applications

Applications testées: IF	Contrôles positifs: IF : tissu hépatique humain,
Spécificité de l'espèce: Humain, porc, rat, souris	

Informations générales

C-reactive protein (CRP) is an acute-phase serum protein synthesized by the liver in response to interleukin-6 (IL-6) during inflammation. The name of CRP derives from its ability to react with the C polysaccharide of *Streptococcus pneumoniae*. CRP is an annular, pentameric protein that belongs to the pentraxin family of proteins. CRP displays several functions associated with host defense: it promotes agglutination, bacterial capsular swelling, phagocytosis and complement fixation through its calcium-dependent binding to phosphorylcholine. It is used mainly as a marker of inflammation.

Stockage

Stockage:
Stocker à -20 °C. Éviter toute exposition à la lumière. Stable pendant un an après l'expédition.
Tampon de stockage:
PBS avec glycérol à 50 %, Proclin300 à 0,05 % et BSA à 0,5 %, pH 7,3.
L'aliquotage n'est pas nécessaire pour le stockage à -20C

***** Les 20ul contiennent 0,1% de BSA.**

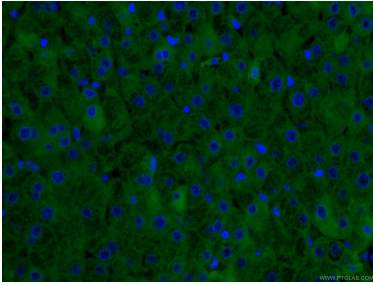
For technical support and original validation data for this product please contact:

T: 1 (888) 4PTGLAB (1-888-478-4522) (toll free
in USA), or 1(312) 455-8498 (outside USA)

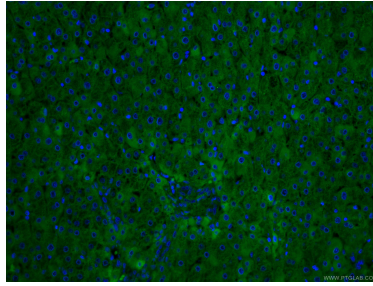
E: proteintech@ptglab.com
W: ptglab.com

This product is exclusively available under Proteintech Group brand and is not available to purchase from any other manufacturer.

Données de validation sélectionnées



Immunofluorescent analysis of (4% PFA) fixed human liver tissue using CL488-66250 (CRP antibody) at dilution of 1:100.



Immunofluorescent analysis of (4% PFA) fixed human liver tissue using CL488-66250 (CRP antibody) at dilution of 1:100.