

À des fins de recherche uniquement

Anticorps Monoclonal anti-KGA-Specific



Numéro de catalogue: **CL488-66265**

Informations de base

Numéro de catalogue: CL488-66265	Numéro d'acquisition GenBank: BC038507	Méthode de purification: Purification par protéine G
Taille: 100ul , Concentration: 1000 µg/ml by Nanodrop;	Identification du gène (NCBI): 2744	CloneNo.: 1B11A11
Hôte: Mouse	Nom complet: glutaminase	Dilutions recommandées: WB 1:500-1:1000
Isotype: IgG1	MW calculé 669 aa, 73 kDa	Excitation/Emission maxima wavelengths: 493 nm / 522 nm
Immunogen Catalog Number: AG24227	MW observés: 65 kDa	

Applications

Applications testées: WB	Contrôles positifs: WB : cellules NIH/3T3, tissu cérébral de souris
Spécificité de l'espèce: Humain, rat, souris	

Informations générales

GLS, also named as GLS1 and KIAA0838, belongs to the glutaminase family. It catalyzes the first reaction in the primary pathway for the renal catabolism of glutamine. Glutaminase-, glutamate-, and taurine-immunoreactive neurons develop neurofibrillary tangles in Alzheimer's disease. The glutaminase band in AA/C1 cells is more intense than in HT29 cells, in accordance with measurements of glutaminase activity, and had the same molecular mass of approx. 63 kDa. The bands for both cell lines are clearly different in size from both rat liver glutaminase (58 kDa) and rat kidney glutaminase (65 kDa) (PMID: 12408749). It also reveals a molecular weight of 83-84 kDa as a phosphate-dependent glutaminase (PMID: 447624;7512428). It has 3 isoforms produced by alternative splicing named as KGA, GAM, GAC. This antibody is specific to KGA.

Stockage

Stockage:
Stocker à -20 °C. Éviter toute exposition à la lumière. Stable pendant un an après l'expédition.
Tampon de stockage:
PBS avec glycérol à 50 %, Proclin300 à 0,05 % et BSA à 0,5 %, pH 7,3.
L'aliquotage n'est pas nécessaire pour le stockage à -20C

***** Les 20ul contiennent 0,1% de BSA.**

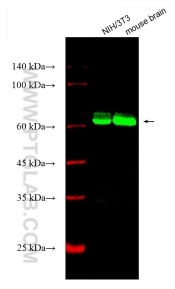
For technical support and original validation data for this product please contact:

T: 1 (888) 4PTGLAB (1-888-478-4522) (toll free
in USA), or 1(312) 455-8498 (outside USA)

E: proteintech@ptglab.com
W: ptglab.com

This product is exclusively available under Proteintech Group brand and is not available to purchase from any other manufacturer.

Données de validation sélectionnées



Various lysates were subjected to SDS PAGE followed by western blot with CL488-66265 (KGA-Specific antibody) at dilution of 1:500 incubated at room temperature for 1.5 hours.