

À des fins de recherche uniquement

# Anticorps Monoclonal anti-BCL6

Numéro de catalogue: CL488-66340



## Informations de base

Numéro de catalogue: CL488-66340	Numéro d'acquisition GenBank: BC150184	Méthode de purification: Purification par protéine G
Taille: 100ul, Concentration: 2000 µg/ml by Nanodrop;	Identification du gène (NCBI): 604	CloneNo.: 1E6B1
Hôte: Mouse	Nom complet: B-cell CLL/lymphoma 6	Excitation/Emission maxima wavelengths: 491 nm / 516 nm
Isotype: IgG1	MW calculé 706 aa, 79 kDa	
Immunogen Catalog Number: AG1519		

## Applications

Applications testées:  
FC (Intra)  
Spécificité de l'espèce:  
Humain

## Informations générales

BCL6, a zinc finger transcription factor, contains a N-terminal BTB/POZ domain and C-terminal zinc finger DNA-binding motifs and represses transcription of a wide range of target proteins and microRNAs. BCL6 protein has been reported as a master regulator of B lymphocyte development and growth, and altered BCL6 protein expression was implicated in pathogenesis of diverse human hematologic malignancies, especially in the diffuse large B cell lymphoma (DLBCL). BCL6 is required for the development of T follicular helper T cells (TFH), a helper T cell subset required for the formation of mature and productive GCs. BCL6 has also been shown to play important regulatory roles in macrophages. This antibody only recognize human species.

## Stockage

Stockage:  
Stocker à -20 °C. Éviter toute exposition à la lumière. Stable pendant un an après l'expédition.  
Tampon de stockage:  
PBS avec glycérol à 50 %, Proclin300 à 0,05 % et BSA à 0,5 %, pH 7,3.  
L'aliquotage n'est pas nécessaire pour le stockage à -20C

**\*\*\* Les 20ul contiennent 0,1% de BSA.**

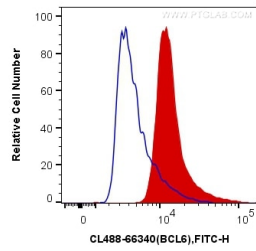
For technical support and original validation data for this product please contact:

T: 1 (888) 4PTGLAB (1-888-478-4522) (toll free  
in USA), or 1(312) 455-8498 (outside USA)

E: [proteintech@ptglab.com](mailto:proteintech@ptglab.com)  
W: [ptglab.com](http://ptglab.com)

**This product is exclusively available under Proteintech Group brand and is not available to purchase from any other manufacturer.**

## Données de validation sélectionnées



1X10<sup>6</sup> Ramos cells were intracellularly stained with 0.4 ug CoraLite®488 Anti-Human BCL6 (CL488-66340, Clone:1E6B1) (red), or 0.4 ug Mouse IgG1 Isotype Control (CL488-66360, Clone: T1F8D3F10) (blue). Cells were fixed and permeabilized with Transcription Factor Staining Buffer Kit (PF00011).