

À des fins de recherche uniquement

Anticorps Monoclonal anti-IgG1 Isotype Control



Numéro de catalogue: CL488-66360-1

Informations de base

Numéro de catalogue:

CL488-66360-1

Taille:

100ug, Concentration: 200 µg/ml by
Nanodrop;

Hôte:

Mouse

Isotype:

IgG1

Numéro d'acquisition GenBank:

Identification du gène (NCBI):

Nom complet:

Méthode de purification:

Purification par protéine G

CloneNo.:

1F8D3

Excitation/Emission maxima
wavelengths:

493 nm / 522 nm

Applications

Applications testées:

FC

Spécificité de l'espèce:

Megathura crenulata

Informations générales

This antibody is used as the isotype control of mouse IgG1 (Kappa). It can be used as the isotype control in Flow Cytometry, Immuno-Precipitation and other experiments. The immunogen of this antibody is Keyhole Limpet Hemocyanin (KLH).

Stockage

Stockage:

Store at 2-8°C. Avoid exposure to light. Stable for one year after shipment.

Tampon de stockage:

PBS with 0.09% sodium azide and 0.5% BSA.

***** Les 20ul contiennent 0,1% de BSA.**

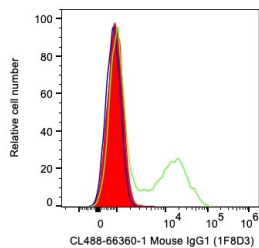
For technical support and original validation data for this product please contact:

T: 1 (888) 4PTGLAB (1-888-478-4522) (toll free
in USA), or 1(312) 455-8498 (outside USA)

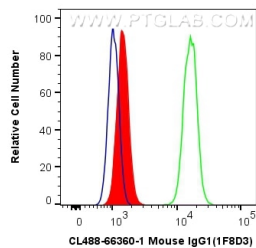
E: proteintech@ptglab.com
W: ptglab.com

This product is exclusively available under Proteintech Group brand and is not available to purchase from any other manufacturer.

Données de validation sélectionnées



1X10⁶ human PBMCs were surface stained with 0.2 ug CoraLite® Plus 488 Anti-IgG1 Isotype Control (CL488-66360-1, Clone:1F8D3) (red), CL488 Anti-Human CD35 (green), or unstained (blue). Cells were not fixed. Lymphocytes were gated.



1X10⁶ A431 cells were intracellularly stained with 0.4 ug CoraLite® Plus 488 Anti-Mouse IgG1 isotype control (CL488-66360-1, Clone: 1F8D3) (red), or 0.4 ug CoraLite® Plus 488 Anti-Human FKBP8 (CL488-66690, Clone: 1C1G12) (green), or unstained (blue). Cells were fixed with 4% PFA and permeabilized with Flow Cytometry Perm Buffer (PF00011-C).