

À des fins de recherche uniquement

Anticorps Monoclonal anti-MMP2

Numéro de catalogue: **CL488-66366** **Phare**



Informations de base

Numéro de catalogue: CL488-66366	Numéro d'acquisition GenBank: BC002576	Méthode de purification: Purification par protéine G
Taille: 100ul , Concentration: 1000 µg/ml by Nanodrop;	Identification du gène (NCBI): 4313	CloneNo.: 2B10D1
Hôte: Mouse	Nom complet: matrix metallopeptidase 2 (gelatinase A, 72kDa gelatinase, 72kDa type IV collagenase)	Dilutions recommandées: IF 1:50-1:500
Isotype: IgG1	MW calculé 72 kDa	Excitation/Emission maxima wavelengths: 493 nm / 522 nm
Immunogen Catalog Number: AG25039	MW observés: 55-74 kDa	

Applications

Applications testées: IF	Contrôles positifs: IF : cellules MCF-7,
Spécificité de l'espèce: Humain, porc, rat, souris	

Informations générales

MMP2, also named as CLG4A, Gelatinase Am, TBE-1 and PEX, belongs to the peptidase M10A family. It is ubiquitous metalloproteinase that is involved in diverse functions such as remodeling of the vasculature, angiogenesis, tissue repair, tumor invasion, inflammation, and atherosclerotic plaque rupture. MMP2 contributes to myocardial oxidative stress by regulating the activity of GSK3beta. It cleaves GSK3beta in vitro. MMP2 can be cleaved into PEX chain (~60kd). Western blot analysis showed that the 72 kDa and 62 kDa proteinase activities were pro-MMP2 and the active enzyme, respectively (PMID:11112697).

Stockage

Stockage:
Stocker à -20 °C. Éviter toute exposition à la lumière.
Tampon de stockage:
PBS avec glycérol à 50 %, Proclin300 à 0,05 % et BSA à 0,5 %, pH 7,3.
L'aliquotage n'est pas nécessaire pour le stockage à -20C

***** Les 20ul contiennent 0,1% de BSA.**

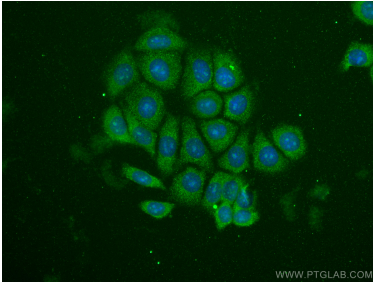
For technical support and original validation data for this product please contact:

T: 1 (888) 4PTGLAB (1-888-478-4522) (toll free in USA), or 1(312) 455-8498 (outside USA)

E: proteintech@ptglab.com
W: ptglab.com

This product is exclusively available under Proteintech Group brand and is not available to purchase from any other manufacturer.

Données de validation sélectionnées



Immunofluorescent analysis of (-20°C Ethanol) fixed MCF-7 cells using CoraLite®@488 MMP2 antibody (CL488-66366, Clone: 2B10D1) at dilution of 1:200.