

À des fins de recherche uniquement

Anticorps Monoclonal anti-G6PD

Numéro de catalogue: CL488-66373

Phare

1 Publications



Informations de base

Numéro de catalogue: CL488-66373	Numéro d'acquisition GenBank: BC000337	Méthode de purification: Purification par protéine A
Taille: 100ul , Concentration: 1000 µg/ml by Nanodrop;	Identification du gène (NCBI): 2539	CloneNo.: 2A7B12
Hôte: Mouse	Nom complet: glucose-6-phosphate dehydrogenase	Dilutions recommandées: IF 1:50-1:500
Isotype: IgG2a	MW calculé 59 kDa	Excitation/Emission maxima wavelengths: 493 nm / 522 nm
Immunogen Catalog Number: AG21862		

Applications

Applications testées: FC (Intra), IF	Contrôles positifs: IF : cellules HeLa,
Spécificité de l'espèce: Humain, souris	

Informations générales

G6PD (Glucose-6-phosphate 1-dehydrogenase) belongs to the glucose-6-phosphate dehydrogenase family. It is a housekeeping enzyme encoded in mammals by an X-linked gene. G6PD has important functions in intermediary metabolism because it catalyzes the first step in the pentose phosphate pathway and provides reductive potential in the form of NADPH. (PMID:7489710). This protein has 3 isoforms produced by alternative splicing.

Publications notables

Autrice	Pubmed ID	Journal	Application
Michal Scur	36433992	Nat Commun	

Stockage

Stockage:
Stocker à -20 °C. Éviter toute exposition à la lumière. Stable pendant un an après l'expédition.
Tampon de stockage:
PBS avec glycérol à 50 %, Proclin300 à 0,05 % et BSA à 0,5 %, pH 7,3.
L'aliquotage n'est pas nécessaire pour le stockage à -20C

*** Les 20ul contiennent 0,1% de BSA.

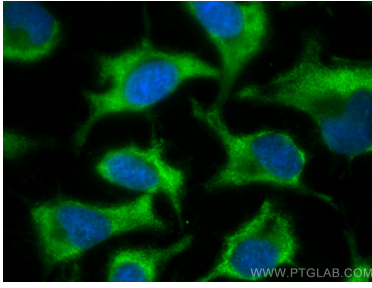
For technical support and original validation data for this product please contact:

T: 1 (888) 4PTGLAB (1-888-478-4522) (toll free
in USA), or 1(312) 455-8498 (outside USA)

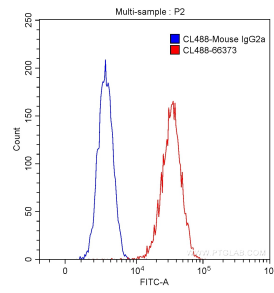
E: proteintech@ptglab.com
W: ptglab.com

This product is exclusively available under Proteintech Group brand and is not available to purchase from any other manufacturer.

Données de validation sélectionnées



Immunofluorescent analysis of (-20°C Ethanol) fixed HeLa cells using CoraLite® Plus 488 G6PD antibody (CL488-66373, Clone: 2A7B12) at dilution of 1:200.



1X10⁶ HeLa cells were stained with 0.50 ug/test CoraLite® Plus 488-conjugated Anti-Human G6PD (CL488-66373, Clone:2A7B12) (red) or 0.50 ug control antibody (blue). Fixed with 90% MeOH.