

À des fins de recherche uniquement

Anticorps Monoclonal anti-Beta Catenin



Numéro de catalogue: **CL488-66379**

Informations de base

Numéro de catalogue: CL488-66379	Numéro d'acquisition GenBank: NM_001904	Méthode de purification: Purification par protéine G
Taille: 100ul , Concentration: 1000 µg/ml by Nanodrop;	Identification du gène (NCBI): 1499	CloneNo.: 1B8A1
Hôte: Mouse	Nom complet: catenin (cadherin-associated protein), beta 1, 88kDa	Dilutions recommandées: IF 1:50-1:500
Isotype: IgG1	MW calculé 781 aa, 86 kDa	Excitation/Emission maxima wavelengths: 493 nm / 522 nm

Applications

Applications testées:
FC (Intra), IF
Spécificité de l'espèce:
Humain, porc, rat, souris

Contrôles positifs:
IF : cellules MCF-7,

Informations générales

β -Catenin, also known as CTNNB1, is an evolutionarily conserved, multifunctional intracellular protein. β -Catenin was originally identified in cell adherens junctions (AJs) where it functions to bridge the cytoplasmic domain of cadherins to α -catenin and the actin cytoskeleton. Besides its essential role in the AJs, β -catenin is also a key downstream component of the canonical Wnt pathway that plays diverse and critical roles in embryonic development and adult tissue homeostasis. The Wnt/ β -catenin pathway is also involved in the activation of other intracellular messengers such as calcium fluxes, JNK, and SRC kinases. Deregulation of β -catenin activity is associated with multiple diseases including cancers. (PMID: 22617422; 18334222) This antibody is conjugated with CL488(Ex/Em 488 nm/515 nm).

Stockage

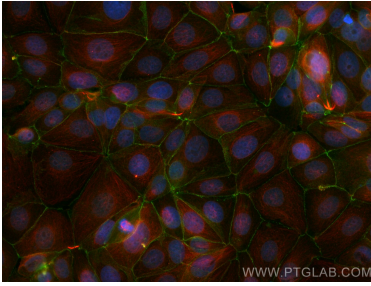
Stockage:
Stocker à -20 °C. Éviter toute exposition à la lumière. Stable pendant un an après l'expédition.
Tampon de stockage:
PBS avec glycérol à 50 %, Proclin300 à 0,05 % et BSA à 0,5 %, pH 7,3.
L'aliquotage n'est pas nécessaire pour le stockage à -20C

***** Les 20ul contiennent 0,1% de BSA.**

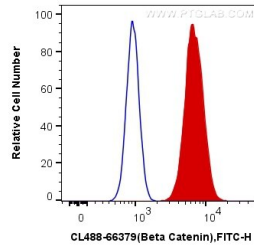
For technical support and original validation data for this product please contact:
T: 1 (888) 4PTGLAB (1-888-478-4522) (toll free in USA), or 1(312) 455-8498 (outside USA)
E: proteintech@ptglab.com
W: ptglab.com

This product is exclusively available under Proteintech Group brand and is not available to purchase from any other manufacturer.

Données de validation sélectionnées



Immunofluorescent analysis of (4% PFA) fixed MCF-7 cells using CoraLite® Plus 488 Beta Catenin antibody (CL488-66379, Clone: 1B8A1) at dilution of 1:200, Alpha Tubulin antibody (11224-1-AP, red).



1X10⁶ MCF-7 cells were intracellularly stained with 0.4 ug CoraLite® Plus 488 Anti-Human Beta Catenin (CL488-66379, Clone:1B8A1) (red), or 0.4 ug Mouse IgG1 Isotype Control (CL488-66360, Clone: T1F8D3F10) (blue). Cells were fixed with 4% PFA and permeabilized with Flow Cytometry Perm Buffer (PF00011-C).