

À des fins de recherche uniquement

# Anticorps Monoclonal anti-Calsequestrin 2



Numéro de catalogue: **CL488-66419**

## Informations de base

Numéro de catalogue: CL488-66419	Numéro d'acquisition GenBank: BC022288	Méthode de purification: Purification par protéine A
Taille: 100ul , Concentration: 1000 µg/ml by Nanodrop;	Identification du gène (NCBI): 845	CloneNo.: 1C10A1
Hôte: Mouse	Nom complet: calsequestrin 2 (cardiac muscle)	Dilutions recommandées: IF 1:50-1:500
Isotype: IgG2a	MW calculé 46 kDa	Excitation/Emission maxima wavelengths: 493 nm / 522 nm
Immunogen Catalog Number: AG13246	MW observés: 50 kDa	

## Applications

Applications testées:

IF

Spécificité de l'espèce:

Humain, porc, rat, souris

Contrôles positifs:

IF : tissu cardiaque de souris,

## Informations générales

Calsequestrin (CASQ) is a Ca<sup>2+</sup>-binding protein present primarily in junctional sarcoplasmic reticulum of skeletal and cardiac muscle; the cardiac form (CASQ2) is encoded by a separate gene. The primary role of CASQ2 is buffering of the sarcoplasmic reticulum Ca<sup>2+</sup> ions, but another role for CASQ2 has emerged recently: CASQ2 regulates the open probability of ryanodine receptor 2 (RyR2). Mutations in CASQ2 cause stress-induced polymorphic ventricular tachycardia, also referred to as catecholaminergic polymorphic ventricular tachycardia 2 (CPVT2), a disease characterized by bidirectional ventricular tachycardia that may lead to cardiac arrest.

## Stockage

Stockage:

Stocker à -20 °C. Éviter toute exposition à la lumière.

Tampon de stockage:

PBS avec glycérol à 50 %, Proclin300 à 0,05 % et BSA à 0,5 %, pH 7,3.

L'aliquotage n'est pas nécessaire pour le stockage à -20C

**\*\*\* Les 20ul contiennent 0,1% de BSA.**

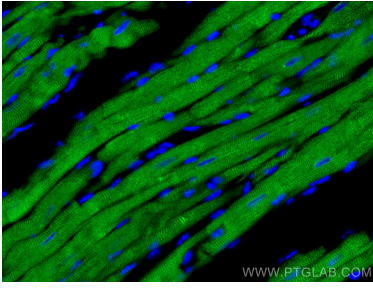
For technical support and original validation data for this product please contact:

T: 1 (888) 4PTGLAB (1-888-478-4522) (toll free  
in USA), or 1(312) 455-8498 (outside USA)

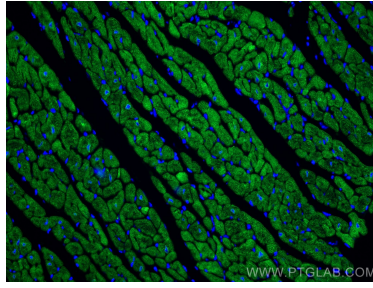
E: [proteintech@ptglab.com](mailto:proteintech@ptglab.com)  
W: [ptglab.com](http://ptglab.com)

**This product is exclusively available under Proteintech Group brand and is not available to purchase from any other manufacturer.**

## Données de validation sélectionnées



Immunofluorescent analysis of (4% PFA) fixed mouse heart tissue using CoraLite® Plus 488 Calsequestrin 2 antibody (CL488-66419, Clone: 1C10A1 ) at dilution of 1:200.



Immunofluorescent analysis of (4% PFA) fixed mouse heart tissue using CoraLite® Plus 488 Calsequestrin 2 antibody (CL488-66419, Clone: 1C10A1 ) at dilution of 1:200.