

À des fins de recherche uniquement

# Anticorps Monoclonal anti-CDC37

Numéro de catalogue: CL488-66420



## Informations de base

Numéro de catalogue: CL488-66420	Numéro d'acquisition GenBank: BC000083	Méthode de purification: Purification par protéine A
Taille: 100ul , Concentration: 2000 µg/ml by Nanodrop;	Identification du gène (NCBI): 11140	CloneNo.: 1C2A6
Hôte: Mouse	Nom complet: cell division cycle 37 homolog (S. cerevisiae)	Dilutions recommandées: WB 1:500-1:1000
Isotype: IgG2a	MW calculé 44 kDa	Excitation/Emission maxima wavelengths: 493 nm / 522 nm
Immunogen Catalog Number: AG0267	MW observés: 44 kDa	

## Applications

Applications testées:  
WB

Spécificité de l'espèce:  
Humain, rat, souris

Contrôles positifs:

WB : cellules HEK-293, cellules Jurkat, cellules MCF-7

## Informations générales

CDC (cell division control) family of proteins are regulatory proteins involved in the processes of cell cycle and proliferation. CDC37, migrated as a protein of 50 kDa in SDS PAGE, is a co-chaperone protein that recruits several immature client kinases to Hsp90 for proper folding. It functions in association with Hsp90, although little is known of its mechanism of action or where it fits into a folding pathway involving other Hsp90 cochaperones. CDC37 up-regulation is a common early event in some localized human cancers. But, the effect of CDC37 dysregulation in human cells is unclear.

## Stockage

Stockage:

Stocker à -20 °C. Éviter toute exposition à la lumière. Stable pendant un an après l'expédition.

Tampon de stockage:

PBS avec glycérol à 50 %, Proclin300 à 0,05 % et BSA à 0,5 %, pH 7,3.

L'aliquotage n'est pas nécessaire pour le stockage à -20C

\*\*\* Les 20ul contiennent 0,1% de BSA.

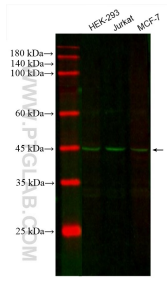
For technical support and original validation data for this product please contact:

T: 1 (888) 4PTGLAB (1-888-478-4522) (toll free  
in USA), or 1(312) 455-8498 (outside USA)

E: [proteintech@ptglab.com](mailto:proteintech@ptglab.com)  
W: [ptglab.com](http://ptglab.com)

This product is exclusively available under Proteintech Group brand and is not available to purchase from any other manufacturer.

## Données de validation sélectionnées



Various lysates were subjected to SDS PAGE followed by western blot with CL488-66420 (CDC37 antibody) at dilution of 1:500 incubated at room temperature for 1.5 hours.