

À des fins de recherche uniquement

Anticorps Monoclonal anti-PEBP1

Numéro de catalogue: CL488-66438



Informations de base

Numéro de catalogue: CL488-66438	Numéro d'acquisition GenBank: BC008714	Méthode de purification: Purification par protéine G
Taille: 100ul , Concentration: 1000 µg/ml by Nanodrop;	Identification du gène (NCBI): 5037	CloneNo.: 2D4D11
Hôte: Mouse	Nom complet: phosphatidylethanolamine binding protein 1	Dilutions recommandées: IF 1:50-1:500
Isotype: IgG1	MW calculé 21 kDa	Excitation/Emission maxima wavelengths: 493 nm / 522 nm
Immunogen Catalog Number: AG0864	MW observés: 23-27 kDa	

Applications

Applications testées: FC (Intra), IF	Contrôles positifs: IF : cellules A549,
Spécificité de l'espèce: Humain, rat, souris	

Informations générales

Raf kinase inhibitor protein (RKIP), also termed phosphatidylethanolamine binding protein PEBP1, was initially identified as a potent inhibitor of Raf-1/MEK/ERK, NF-κB, and G-protein-coupled receptor signaling pathways. Later RKIP has been further identified as a metastasis suppressor and its loss of expression has been reported in various cancers. Its expression has been proposed as a prognostic marker for patients diagnosed with the above cancers.

Stockage

Stockage:
Stocker à -20 °C. Éviter toute exposition à la lumière. Stable pendant un an après l'expédition.
Tampon de stockage:
PBS avec glycérol à 50 %, Proclin300 à 0,05 % et BSA à 0,5 %, pH 7,3.
L'aliquotage n'est pas nécessaire pour le stockage à -20C

***** Les 20ul contiennent 0,1% de BSA.**

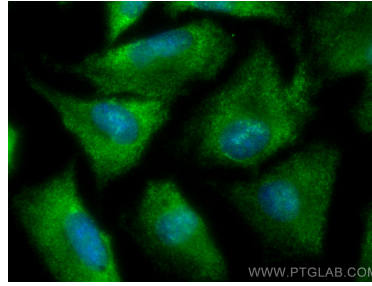
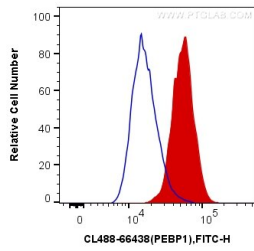
For technical support and original validation data for this product please contact:

T: 1 (888) 4PTGLAB (1-888-478-4522) (toll free
in USA), or 1(312) 455-8498 (outside USA)

E: proteintech@ptglab.com
W: ptglab.com

This product is exclusively available under Proteintech Group brand and is not available to purchase from any other manufacturer.

Données de validation sélectionnées



1X10⁶ PC-12 cells were intracellularly stained with 0.4 ug CoraLite® Plus 488 Anti-Human PEBP1 (CL488-66438, Clone:2D4D11) (red), or 0.4 ug Mouse IgG1 Isotype Control (CL488-66360, Clone: T1F8D3F10) (blue). Cells were fixed with 4% PFA and permeabilized with Flow Cytometry Perm Buffer (PF00011-C).

Immunofluorescent analysis of (-20°C Ethanol) fixed A549 cells using CoraLite® Plus 488 PEBP1 antibody (CL488-66438, Clone: 2D4D11) at dilution of 1:200.