

À des fins de recherche uniquement

Anticorps Monoclonal anti-IKBKG

Numéro de catalogue: CL488-66460



Informations de base

| | | |
|--|---|---|
| Numéro de catalogue: CL488-66460 | Numéro d'acquisition GenBank: BC012114 | Méthode de purification: Purification par protéine G |
| Taille: 100ul , Concentration: 1000 µg/ml by Nanodrop; | Identification du gène (NCBI): 8517 | CloneNo.: 1F2E2 |
| Hôte: Mouse | Nom complet: inhibitor of kappa light polypeptide gene enhancer in B-cells, kinase gamma | Dilutions recommandées: IF 1:50-1:500 |
| Isotype: IgG1 | MW calculé 48 kDa | Excitation/Emission maxima wavelengths: 493 nm / 522 nm |
| Immunogen Catalog Number: AG13358 | MW observés: 48 kDa | |

Applications

| | |
|------------------------------------|--|
| Applications testées: IF | Contrôles positifs: IF : cellules HeLa, |
| Spécificité de l'espèce: Humain | |

Informations générales

IKBKG, also named as FIP3, NEMO, IKKAP1 and IKKG, is specifically phosphorylate serine or threonine residues that are followed by a proline residue. IKBKG is regulatory subunit of the IKK core complex which phosphorylates inhibitors of NF-kappa-B thus leading to the dissociation of the inhibitor/NF-kappa-B complex and ultimately the degradation of the inhibitor. Its binding to scaffolding polyubiquitin seems to play a role in IKK activation by multiple signaling receptor pathways.

Stockage

Stockage:
Stocker à -20 °C. Éviter toute exposition à la lumière.
Tampon de stockage:
PBS avec glycérol à 50 %, Proclin300 à 0,05 % et BSA à 0,5 %, pH 7,3.
L'aliquotage n'est pas nécessaire pour le stockage à -20C

***** Les 20ul contiennent 0,1% de BSA.**

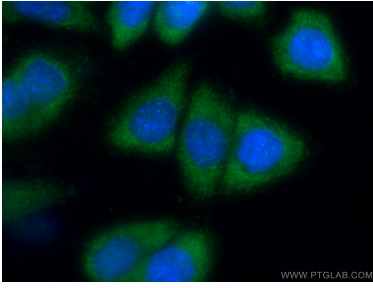
For technical support and original validation data for this product please contact:

T: 1 (888) 4PTGLAB (1-888-478-4522) (toll free
in USA), or 1(312) 455-8498 (outside USA)

E: proteintech@ptglab.com
W: ptglab.com

This product is exclusively available under Proteintech Group brand and is not available to purchase from any other manufacturer.

Données de validation sélectionnées



Immunofluorescent analysis of (-20°C Ethanol) fixed HeLa cells using CoraLite®@488 IKKKG antibody (CL488-66460, Clone: 1F2E2) at dilution of 1:100.