

À des fins de recherche uniquement

Anticorps Monoclonal anti-SLP76

Numéro de catalogue: **CL488-66465**



Informations de base

Numéro de catalogue: CL488-66465	Numéro d'acquisition GenBank: BC016618	Méthode de purification: Purification par protéine G
Taille: 100ul , Concentration: 1000 µg/ml by Nanodrop;	Identification du gène (NCBI): 3937	CloneNo.: 4H10B1
Hôte: Mouse	Nom complet: lymphocyte cytosolic protein 2 (SH2 domain containing leukocyte protein of 76kDa)	Dilutions recommandées: IF 1:50-1:500
Isotype: IgG1	MW calculé 533 aa, 60 kDa	Excitation/Emission maxima wavelengths: 493 nm / 522 nm
Immunogen Catalog Number: AG3432	MW observés: 76 kDa	

Applications

Applications testées: FC (Intra), IF	Contrôles positifs: IF : cellules HeLa,
Spécificité de l'espèce: Humain	

Informations générales

LCP2, also named as SLP76, is an adapter protein that acts as a substrate of the T cell antigen receptor (TCR)-activated protein tyrosine kinase pathway. It contains an N-terminal leucine Zip motif, a tyrosine-rich domain, a proline-rich domain and a C-terminal SH2 domain. It is constitutively associated with the growth factor receptor-bound protein 2 (Grb2)-related adapter protein 2 (Grap2, a.k.a. GADS) through the interaction of its proline residues with one of the SH3 domains of Grap2. SLP76 associates with growth factor receptor bound protein 2 (Grap2), and is thought to play a role TCR-mediated intracellular signal transduction. SLP76 is also expressed by mast cells, and mast cell activation was markedly impaired in SLP76-deficient mice.

Stockage

Stockage:
Stocker à -20°C. Éviter toute exposition à la lumière. Stable pendant un an après l'expédition.
Tampon de stockage:
PBS avec glycérol à 50 %, Proclin300 à 0,05 % et BSA à 0,5 %, pH 7,3.
L'aliquotage n'est pas nécessaire pour le stockage à -20C

***** Les 20ul contiennent 0,1% de BSA.**

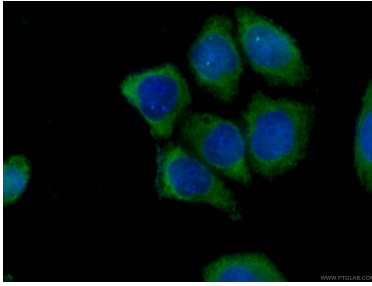
For technical support and original validation data for this product please contact:

T: 1 (888) 4PTGLAB (1-888-478-4522) (toll free
in USA), or 1(312) 455-8498 (outside USA)

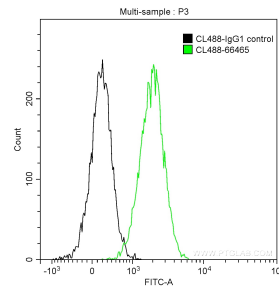
E: proteintech@ptglab.com
W: ptglab.com

This product is exclusively available under Proteintech Group brand and is not available to purchase from any other manufacturer.

Données de validation sélectionnées



Immunofluorescent analysis of (-20°C Ethanol) fixed HeLa cells using CL488-66465 (SLP76 antibody) at dilution of 1:100.



1X10⁶ Jurkat cells were intracellularly stained with 0.2 ug CoraLite® Plus 488 Anti-Human SLP76 (CL488-66465, Clone:4H10B1) and CoraLite® Plus 488-Conjugated AffiniPure Goat Anti-Mouse IgG(H+L) at dilution 1:1000 (green), and 0.2 ug Mouse IgG1 Isotype Control (66360-1-Ig, Clone: T1F8D3F10) (black). Cells were fixed with 4% PFA and permeabilized with 0.1% TritonX-100.