

À des fins de recherche uniquement

Anticorps Monoclonal anti-SOD2

Numéro de catalogue: CL488-66474



Informations de base

Numéro de catalogue: CL488-66474	Numéro d'acquisition GenBank: BC016934	Méthode de purification: Purification par protéine A
Taille: 100ul , Concentration: 1000 µg/ml by Nanodrop;	Identification du gène (NCBI): 6648	CloneNo.: 3A6C2
Hôte: Mouse	Nom complet: superoxide dismutase 2, mitochondrial	Dilutions recommandées: IF 1:50-1:500
Isotype: IgG2a	MW calculé 25 kDa	Excitation/Emission maxima wavelengths: 493 nm / 522 nm
Immunogen Catalog Number: AG21388	MW observés: 25 kDa	

Applications

Applications testées: FC (Intra), IF	Contrôles positifs: IF : cellules HUVEC,
Spécificité de l'espèce: Humain, porc, rat, souris	

Informations générales

SOD2(superoxide dismutase 2, mitochondrial) is also named as IPOB, MNSOD, SODM, Mn-SOD and belongs to the iron/manganese superoxide dismutase family. It is a marker of mitochondria, which is restricted to the perinuclear area in a cell with aggregate formation of mutant SOD1(PMID:12659845). It functions as the first line of antioxidant defense against highly reactive superoxide radicals and it appears to be early predictors for survival in septic patients with with MIF(PMID:20863520). It has 2 isoforms with the molecular weight of 25 kDa and 21 kDa.

Stockage

Stockage:
Stocker à -20 °C. Éviter toute exposition à la lumière. Stable pendant un an après l'expédition.
Tampon de stockage:
PBS avec glycérol à 50 %, Proclin300 à 0,05 % et BSA à 0,5 %, pH 7,3.
L'aliquotage n'est pas nécessaire pour le stockage à -20C

***** Les 20ul contiennent 0,1% de BSA.**

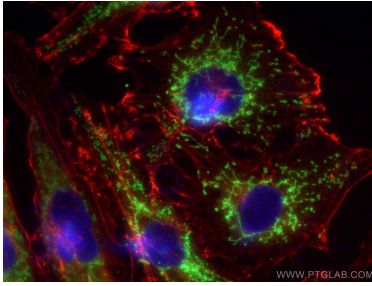
For technical support and original validation data for this product please contact:

T: 1 (888) 4PTGLAB (1-888-478-4522) (toll free
in USA), or 1(312) 455-8498 (outside USA)

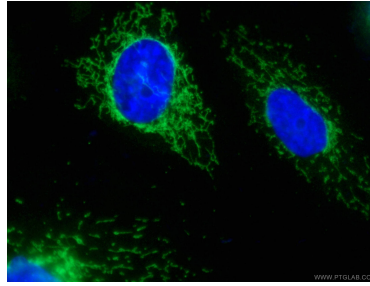
E: proteintech@ptglab.com
W: ptglab.com

This product is exclusively available under Proteintech Group brand and is not available to purchase from any other manufacturer.

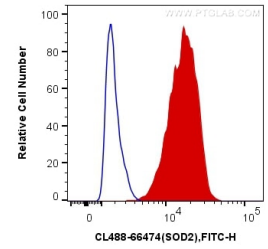
Données de validation sélectionnées



Immunofluorescent analysis of (-20°C Methanol) fixed HUVEC cells using CoraLite® Plus 488 SOD2 antibody (CL488-66474, Clone: 3A6C2) at dilution of 1:200, CoraLite®594 Beta Actin antibody (CL594-66009, Clone: 2D4H5, red).



Immunofluorescent analysis of (-20°C Ethanol) fixed HUVEC cells using CL488-66474 (SOD2) antibody at dilution of 1:100.



1X10⁶ HeLa cells were intracellularly stained with 0.4 ug CoraLite® Plus 488 Anti-Human SOD2 (CL488-66474, Clone:3A6C2) (red), or 0.4 ug Mouse IgG2a Isotype Control (CL488-66360-2, Clone: K11A1B2A2) (blue). Cells were fixed with 4% PFA and permeabilized with Flow Cytometry Perm Buffer (PF00011-C).