

À des fins de recherche uniquement

# Anticorps Monoclonal anti-MYPT1

Numéro de catalogue: CL488-66506



## Informations de base

<b>Numéro de catalogue:</b> CL488-66506	<b>Numéro d'acquisition GenBank:</b> BC111752	<b>Méthode de purification:</b> Purification par protéine A
<b>Taille:</b> 100ul , Concentration: 1000 µg/ml by Nanodrop;	<b>Identification du gène (NCBI):</b> 4659	<b>CloneNo.:</b> 2A1A9
<b>Hôte:</b> Mouse	<b>Nom complet:</b> protein phosphatase 1, regulatory (inhibitor) subunit 12A	<b>Dilutions recommandées:</b> IF 1:50-1:500
<b>Isotype:</b> IgG3	<b>MW calculé</b> 1030 aa, 115 kDa	<b>Excitation/Emission maxima wavelengths:</b> 493 nm / 522 nm
<b>Immunogen Catalog Number:</b> AG17496	<b>MW observés:</b> 115 kDa	

## Applications

<b>Applications testées:</b> IF	<b>Contrôles positifs:</b> IF : cellules HeLa,
<b>Spécificité de l'espèce:</b> Humain, rat, souris	

## Informations générales

Myosin phosphatase target subunit 1(MYPT1), which is also called PPP1R12A, is one of the subunits of myosin phosphatase. Myosin phosphatase regulates the interaction of actin and myosin downstream of the guanosine triphosphatase Rho. The small guanosine triphosphatase Rho is implicated in myosin light chain (MLC) phosphorylation, which results in contraction of smooth muscle and interaction of actin and myosin in nonmuscle cells. The guanosine triphosphate (GTP)-bound, active form of RhoA (GTP.RhoA) specifically interacted with the myosin-binding subunit (MBS) of myosin phosphatase, which regulates the extent of phosphorylation of MLC. Rho-associated kinase (Rho-kinase), which is activated by GTP. RhoA, phosphorylated MBS and consequently inactivated myosin phosphatase. Overexpression of RhoA or activated RhoA in NIH 3T3 cells increased phosphorylation of MBS and MLC. Thus, Rho appears to inhibit myosin phosphatase through the action of Rho-kinase. Phosphorylation of MYPT1 at Thr696 and Thr853 results in phosphatase inhibition and cytoskeletal reorganization.

## Stockage

**Stockage:**  
Stocker à -20 °C. Éviter toute exposition à la lumière. Stable pendant un an après l'expédition.  
**Tampon de stockage:**  
PBS avec glycérol à 50 %, Proclin300 à 0,05 % et BSA à 0,5 %, pH 7,3.  
L'aliquotage n'est pas nécessaire pour le stockage à -20C

\*\*\* Les 20ul contiennent 0,1% de BSA.

For technical support and original validation data for this product please contact:

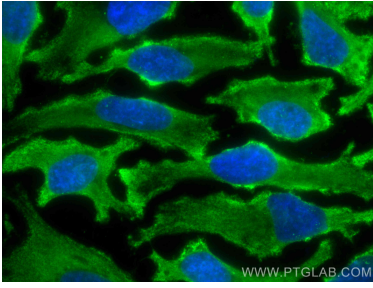
T: 1 (888) 4PTGLAB (1-888-478-4522) (toll free in USA), or 1(312) 455-8498 (outside USA)

E: [proteintech@ptglab.com](mailto:proteintech@ptglab.com)  
W: [ptglab.com](http://ptglab.com)

This product is exclusively available under Proteintech Group brand and is not available to purchase from any other manufacturer.

---

## Données de validation sélectionnées



Immunofluorescent analysis of (-20°C Methanol) fixed HeLa cells using CoraLite® Plus 488 MYPT1 antibody (CL488-66506, Clone: 2A1A9) at dilution of 1:200.