

À des fins de recherche uniquement

Anticorps Monoclonal anti-PARP1

Numéro de catalogue: **CL488-66520**



Informations de base

Numéro de catalogue: CL488-66520	Numéro d'acquisition GenBank: BC037545	Méthode de purification: Purification par protéine G
Taille: 100ul , Concentration: 2000 µg/ml by Nanodrop;	Identification du gène (NCBI): 142	CloneNo.: 1D7D4
Hôte: Mouse	Nom complet: poly (ADP-ribose) polymerase 1	Dilutions recommandées: IF 1:50-1:500
Isotype: IgG1	MW calculé 1014 aa, 113 kDa	Excitation/Emission maxima wavelengths: 491 nm / 516 nm
Immunogen Catalog Number: AG19173		

Applications

Applications testées: FC (Intra), IF	Contrôles positifs:
Spécificité de l'espèce: Humain, souris	IF : tissu de cancer du poumon humain, cellules Neuro-2a

Informations générales

PARP1 (poly(ADP-ribose) polymerase 1) is a nuclear enzyme catalyzing the poly(ADP-ribosyl)ation of many key proteins in vivo. The normal function of PARP1 is the routine repair of DNA damage. Activated by DNA strand breaks, the PARP1 is cleaved into an 85 to 89-kDa COOH-terminal fragment and a 24-kDa NH2-terminal peptide by caspases during the apoptotic process. The appearance of PARP fragments is commonly considered as an important biomarker of apoptosis. In addition to caspases, other proteases like calpains, cathepsins, granzymes and matrix metalloproteinases (MMPs) have also been reported to cleave PARP1 and gave rise to fragments ranging from 42-89-kD. This antibody was generated against the N-terminal region of human PARP1 and it recognizes the full-length as well as the cleavage of the PARP1.

Stockage

Stockage:
Stocker à -20 °C. Éviter toute exposition à la lumière. Stable pendant un an après l'expédition.
Tampon de stockage:
PBS avec glycérol à 50 %, Proclin300 à 0,05 % et BSA à 0,5 %, pH 7,3.
L'aliquotage n'est pas nécessaire pour le stockage à -20C

***** Les 20ul contiennent 0,1% de BSA.**

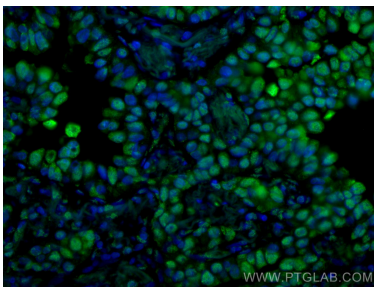
For technical support and original validation data for this product please contact:

T: 1 (888) 4PTGLAB (1-888-478-4522) (toll free
in USA), or 1(312) 455-8498 (outside USA)

E: proteintech@ptglab.com
W: ptglab.com

This product is exclusively available under Proteintech Group brand and is not available to purchase from any other manufacturer.

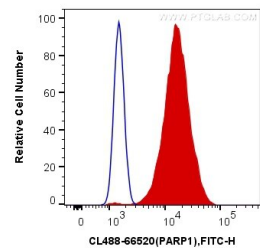
Données de validation sélectionnées



Immunofluorescent analysis of (4% PFA) fixed human lung cancer tissue using CoraLite®488 PARP1 antibody (CL488-66520, Clone: 1D7D4) at dilution of 1:200.



Immunofluorescent analysis of (4% PFA) fixed Neuro-2a cells using CoraLite®488 PARP1 antibody (CL488-66520, Clone: 1D7D4) at dilution of 1:1600.



1X10⁶ HeLa cells were intracellularly stained with 0.2 ug CoraLite®488 Anti-Human PARP1 (CL488-66520, Clone:1D7D4) (red), or 0.2 ug Mouse IgG1 Isotype Control (CL488-66360, Clone: T1F8D3F10) (blue). Cells were fixed and permeabilized with Transcription Factor Staining Buffer Kit (PF00011).