

À des fins de recherche uniquement

# Anticorps Monoclonal anti-PEDF

Numéro de catalogue: **CL488-66554**



## Informations de base

<b>Numéro de catalogue:</b> CL488-66554	<b>Numéro d'acquisition GenBank:</b> BC013984	<b>Méthode de purification:</b> Purification par protéine G
<b>Taille:</b> 100ul , Concentration: 1000 µg/ml by Nanodrop;	<b>Identification du gène (NCBI):</b> 5176	<b>CloneNo.:</b> 2C5C8
<b>Hôte:</b> Mouse	<b>Nom complet:</b> serpin peptidase inhibitor, clade F (alpha-2 antiplasmin, pigment epithelium derived factor), member 1	<b>Dilutions recommandées:</b> WB 1:500-1:1000
<b>Isotype:</b> IgG1	<b>MW calculé</b> 418 aa, 46 kDa	<b>Excitation/Emission maxima wavelengths:</b> 493 nm / 522 nm
<b>Immunogen Catalog Number:</b> AG26660	<b>MW observés:</b> 46-50 kDa	

## Applications

<b>Applications testées:</b> WB	<b>Contrôles positifs:</b> WB : plasma de porc, plasma humain
<b>Spécificité de l'espèce:</b> Humain, porc	

## Informations générales

PEDF also known as serpin F1 (SERPINF1), is a multifunctional secreted protein that has anti-angiogenic, anti-tumorigenic, and neurotrophic functions. It is an approximately 50-kDa secreted protein that is widely expressed, including by osteoblasts and osteoclasts. PEDF is also one of the most abundant secretory products of adipocytes, and circulating concentrations of PEDF correlate positively with body fat mass and INS resistance. PEDF is a neurotrophic factor involved in neuronal differentiation in retinoblastoma cells. Mutations in this gene were found in individuals with osteogenesis imperfecta, type VI.

## Stockage

**Stockage:**  
Stocker à -20 °C. Éviter toute exposition à la lumière. Stable pendant un an après l'expédition.  
**Tampon de stockage:**  
PBS avec glycérol à 50 %, Proclin300 à 0,05 % et BSA à 0,5 %, pH 7,3.  
L'aliquotage n'est pas nécessaire pour le stockage à -20C

**\*\*\* Les 20ul contiennent 0,1% de BSA.**

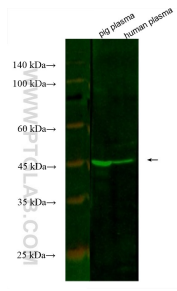
For technical support and original validation data for this product please contact:

T: 1 (888) 4PTGLAB (1-888-478-4522) (toll free in USA), or 1(312) 455-8498 (outside USA)

E: [proteintech@ptglab.com](mailto:proteintech@ptglab.com)  
W: [ptglab.com](http://ptglab.com)

**This product is exclusively available under Proteintech Group brand and is not available to purchase from any other manufacturer.**

## Données de validation sélectionnées



Various lysates were subjected to SDS PAGE followed by western blot with CL488-66554 (PEDF antibody) at dilution of 1:500 incubated at room temperature for 1.5 hours.