

À des fins de recherche uniquement

Anticorps Monoclonal anti-Tom22

Numéro de catalogue: CL488-66562



Informations de base

Numéro de catalogue: CL488-66562	Numéro d'acquisition GenBank: BC009363	Méthode de purification: Purification par protéine A
Taille: 100ul, Concentration: 1000 µg/ml by Nanodrop;	Identification du gène (NCBI): 56993	CloneNo.: 1C2B11
Hôte: Mouse	Nom complet: translocase of outer mitochondrial membrane 22 homolog (yeast)	Dilutions recommandées: IF 1:50-1:500
Isotype: IgG2a	MW calculé 15 kDa	Excitation/Emission maxima wavelengths: 493 nm / 522 nm
Immunogen Catalog Number: AG1797	MW observés: 22 kDa	

Applications

Applications testées: FC (Intra), IF	Contrôles positifs: IF : cellules HepG2,
Spécificité de l'espèce: Humain	

Informations générales

TOMM22 is a central receptor component of the translocase of the outer membrane of mitochondria responsible for the recognition and translocation of cytosolically synthesized mitochondrial preproteins. It is showed in UniProt that phosphorylation is performed at three positions of this protein which may increase the molecular weight. Catalog#66562-1-Ig recognises the 22 kDa protein larger than the calculated MW which is 15 kDa. Besides, it has been reported the MV of TOMM22 is 22 kDa (PMID:19285029).

Stockage

Stockage:
Stocker à -20 °C. Éviter toute exposition à la lumière. Stable pendant un an après l'expédition.
Tampon de stockage:
PBS avec glycérol à 50 %, Proclin300 à 0,05 % et BSA à 0,5 %, pH 7,3.
L'aliquotage n'est pas nécessaire pour le stockage à -20C

***** Les 20ul contiennent 0,1% de BSA.**

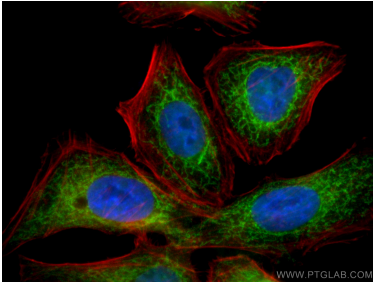
For technical support and original validation data for this product please contact:

T: 1 (888) 4PTGLAB (1-888-478-4522) (toll free
in USA), or 1(312) 455-8498 (outside USA)

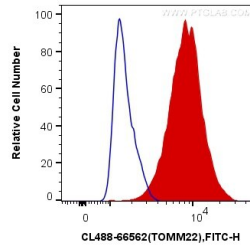
E: proteintech@ptglab.com
W: ptglab.com

This product is exclusively available under Proteintech Group brand and is not available to purchase from any other manufacturer.

Données de validation sélectionnées



Immunofluorescent analysis of (4% PFA) fixed HepG2 cells using CoraLite® Plus 488-conjugated Tom22 antibody (CL488-66562, Clone: 1C2B11) at dilution of 1:200, CL594-Phalloidin (red).



1X10⁶ HEK-293 cells were intracellularly stained with 0.4 ug CoraLite® Plus 488 Anti-Human Tom22 (CL488-66562, Clone:1C2B11) (red), or 0.4 ug Mouse IgG2a Isotype Control (CL488-66360-2, Clone: K11A1B2A2) (blue). Cells were fixed with 4% PFA and permeabilized with Flow Cytometry Perm Buffer (PF00011-C).