

À des fins de recherche uniquement

Anticorps Monoclonal anti-SDHA

Numéro de catalogue: CL488-66588



Informations de base

Numéro de catalogue: CL488-66588	Numéro d'acquisition GenBank: BC001380	Méthode de purification: Purification par protéine G
Taille: 100ul, Concentration: 810 µg/ml by Nanodrop;	Identification du gène (NCBI): 6389	CloneNo.: 5E10G12
Hôte: Mouse	Nom complet: succinate dehydrogenase complex, subunit A, flavoprotein (Fp)	Dilutions recommandées: IF 1:50-1:500
Isotype: IgG1	MW calculé 73 kDa	Excitation/Emission maxima wavelengths: 493 nm / 522 nm
Immunogen Catalog Number: AG7023	MW observés: 62-73 kDa	

Applications

Applications testées: FC (Intra), IF	Contrôles positifs: IF : cellules HepG2,
Spécificité de l'espèce: Humain, rat, souris	

Informations générales

SDHA, also named as SDH2, SDHF and Fp, belongs to the FAD-dependent oxidoreductase 2 family and FRD/SDH subfamily. SDHA is the flavoprotein subunit of succinate dehydrogenase (SDH) that is involved in complex II of the mitochondrial electron transport chain and is responsible for transferring electrons from succinate to ubiquinone (coenzyme Q). SDHA has 3 isoforms with the molecular mass of 73, 67 and 57 kDa, and the N-terminal (~5 kDa) can be removed in mature form. It can be detected a band of 68 kDa in cutaneous melanoma (PMID:21698147). SDHA may act as a tumor suppressor.

Stockage

Stockage:
Stocker à -20 °C. Éviter toute exposition à la lumière. Stable pendant un an après l'expédition.
Tampon de stockage:
PBS avec glycérol à 50 %, Proclin300 à 0,05 % et BSA à 0,5 %, pH 7,3.
L'aliquotage n'est pas nécessaire pour le stockage à -20C

***** Les 20ul contiennent 0,1% de BSA.**

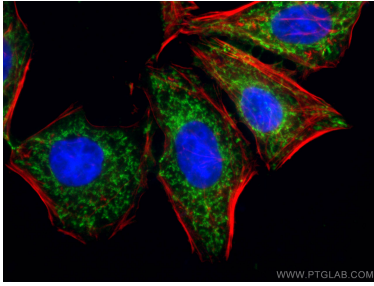
For technical support and original validation data for this product please contact:

T: 1 (888) 4PTGLAB (1-888-478-4522) (toll free
in USA), or 1(312) 455-8498 (outside USA)

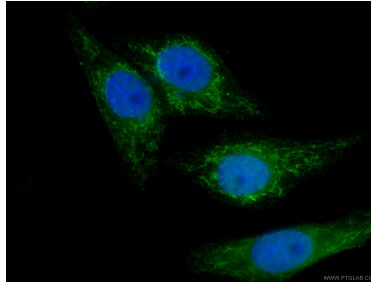
E: proteintech@ptglab.com
W: ptglab.com

This product is exclusively available under Proteintech Group brand and is not available to purchase from any other manufacturer.

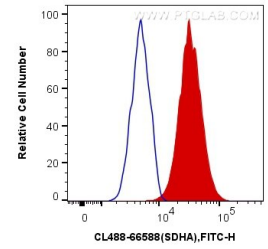
Données de validation sélectionnées



Immunofluorescent analysis of (4% PFA) fixed HepG2 cells using CoraLite® Plus 488-conjugated SDHA antibody (CL488-66588, Clone: 5E10G12) at dilution of 1:100. Red: CL594-Phalloidin stains F-Actin; Blue: DAPI.



Immunofluorescent analysis of (4% PFA) fixed HepG2 cells using CL488-66588 (SDHA antibody) at dilution of 1:100.



1X10⁶ HeLa cells were intracellularly stained with 0.4 ug CoraLite® Plus 488 Anti-Human SDHA (CL488-66588, Clone:5E10G12) (red), or 0.4 ug Control Antibody. Cells were fixed with 4% PFA and permeabilized with Flow Cytometry Perm Buffer (PF00011-C).