

À des fins de recherche uniquement

Anticorps Monoclonal anti-RIC8A

Numéro de catalogue: CL488-66625



Informations de base

Numéro de catalogue: CL488-66625	Numéro d'acquisition GenBank: BC011821	Méthode de purification: Purification par protéine G
Taille: 100ul, Concentration: 1000 µg/ml by Nanodrop;	Identification du gène (NCBI): 60626	CloneNo.: 1E3B11
Hôte: Mouse	Nom complet: resistance to inhibitors of cholinesterase 8 homolog A (C. elegans)	Dilutions recommandées: IF 1:50-1:500
Isotype: IgG1	MW calculé 60 kDa	Excitation/Emission maxima wavelengths: 493 nm / 522 nm
Immunogen Catalog Number: AG1593	MW observés: 65 kDa	

Applications

Applications testées: IF	Contrôles positifs: IF : tissu cérébral de souris,
Spécificité de l'espèce: Humain, rat, souris	

Informations générales

RIC8A, also named as synembryn-A, is a Guanine nucleotide exchange factor (GEF), which can activate some, but not all, G-alpha proteins by exchanging bound GDP for free GTP. It is involved in regulation of microtubule pulling forces during mitotic movement of chromosomes by stimulating G(i)-alpha protein, possibly leading to release G(i)-alpha-GTP and NuMA proteins from the NuMA-GPSM2-G(i)-alpha-GDP complex. RIC8A also acts as an activator for G(q)-alpha (GNAQ) protein by enhancing the G(q)-coupled receptor-mediated ERK activation.

Stockage

Stockage:
Stocker à -20°C. Éviter toute exposition à la lumière.
Tampon de stockage:
PBS avec glycérol à 50 %, Proclin300 à 0,05 % et BSA à 0,5 %, pH 7,3.
L'aliquotage n'est pas nécessaire pour le stockage à -20C

***** Les 20ul contiennent 0,1% de BSA.**

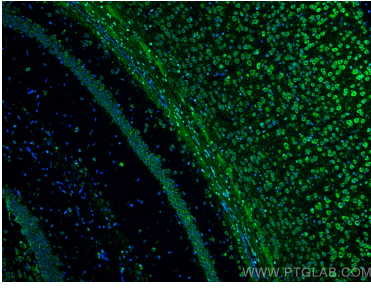
For technical support and original validation data for this product please contact:

T: 1 (888) 4PTGLAB (1-888-478-4522) (toll free
in USA), or 1(312) 455-8498 (outside USA)

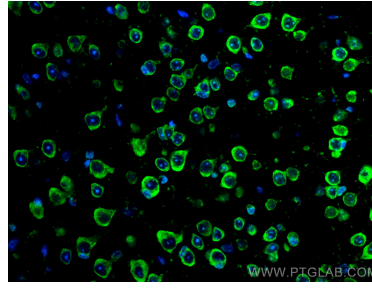
E: proteintech@ptglab.com
W: ptglab.com

This product is exclusively available under Proteintech Group brand and is not available to purchase from any other manufacturer.

Données de validation sélectionnées



Immunofluorescent analysis of (4% PFA) fixed mouse brain tissue using CoraLite® Plus 488 RIC8A antibody (CL488-66625, Clone: 1E3B11) at dilution of 1:200.



Immunofluorescent analysis of (4% PFA) fixed mouse brain tissue using CoraLite® Plus 488 RIC8A antibody (CL488-66625, Clone: 1E3B11) at dilution of 1:200.