

À des fins de recherche uniquement

Anticorps Monoclonal anti-TLR2

Numéro de catalogue: **CL488-66645** **Phare**



Informations de base

Numéro de catalogue: CL488-66645	Numéro d'acquisition GenBank: BC033756	Méthode de purification: Purification par protéine A
Taille: 100ul , Concentration: 1000 µg/ml by Nanodrop;	Identification du gène (NCBI): 7097	CloneNo.: 1C1D3
Hôte: Mouse	Nom complet: toll-like receptor 2	Excitation/Emission maxima wavelengths: 493 nm / 522 nm
Isotype: IgG2a	MW calculé 784 aa, 90 kDa	
Immunogen Catalog Number: AG25626	MW observés: 90-100 kDa	

Applications

Applications testées:
FC (Intra)
Spécificité de l'espèce:
Humain

Informations générales

TLR2, also known as CD282, is a member of the Toll-like receptor (TLR) family. TLR receptors are type I integral transmembrane glycoproteins which play a fundamental role in pathogen recognition and activation of innate immunity. TLR2 is expressed by immune cells including monocytes/macrophages, polymorphonuclear leukocytes (PMLs) and dendritic cells, and is also expressed by some non-immune cells including endothelial and epithelial cells (PMID: 21428911; 22566960). TLR2 forms heterodimers with TLR1 and TLR6, which is the initial step in a cascade of events leading to significant innate immune responses, development of adaptive immunity to pathogens and protection from immune sequelae related to infection with these pathogens (PMID: 22566960).

Stockage

Stockage:
Stocker à -20 °C. Éviter toute exposition à la lumière. Stable pendant un an après l'expédition.
Tampon de stockage:
PBS avec glycérol à 50 %, Proclin300 à 0,05 % et BSA à 0,5 %, pH 7,3.
L'aliquotage n'est pas nécessaire pour le stockage à -20C

***** Les 20ul contiennent 0,1% de BSA.**

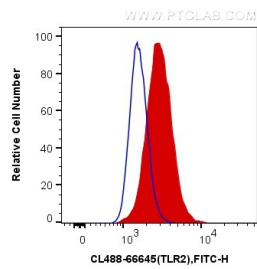
For technical support and original validation data for this product please contact:

T: 1 (888) 4PTGLAB (1-888-478-4522) (toll free
in USA), or 1(312) 455-8498 (outside USA)

E: proteintech@ptglab.com
W: ptglab.com

This product is exclusively available under Proteintech Group brand and is not available to purchase from any other manufacturer.

Données de validation sélectionnées



1X10⁶ THP-1 cells were intracellularly stained with 0.4 ug CoraLite® Plus 488 Anti-Human TLR2 (CL488-66645, Clone:1C1D3) (red), or 0.4 ug Control Antibody. Cells were fixed with 4% PFA and permeabilized with Flow Cytometry Perm Buffer (PF00011-C).