

À des fins de recherche uniquement

Anticorps Monoclonal anti-EPHA7

Numéro de catalogue: CL488-66667



Informations de base

Numéro de catalogue: CL488-66667	Numéro d'acquisition GenBank: BC027940	Méthode de purification: Purification par protéine G
Taille: 100ul, Concentration: 1000 µg/ml by Nanodrop;	Identification du gène (NCBI): 2045	CloneNo.: 1A7E5
Hôte: Mouse	Nom complet: EPH receptor A7	Excitation/Emission maxima wavelengths: 493 nm / 522 nm
Isotype: IgG1	MW calculé: 998 aa, 112 kDa	
Immunogen Catalog Number: AG3813	MW observés: 120 kDa	

Applications

Applications testées:
FC (Intra)

Spécificité de l'espèce:
Humain, porc, rat, souris

Informations générales

Ephrin receptor A7 (EphA7) is a member of the Eph receptor family. EPHA7 plays a role in corticogenesis processes, determines brain size and shape, and is involved in development of the central nervous system (PMID:34176129). In addition, EphA7 also has a dual role of tumor promoter and tumor suppressor. It can participate in cell proliferation, migration and apoptosis through various mechanisms, and affect tumor differentiation, staging and prognosis. EphA7 may be a potential diagnostic marker and tumor treatment target (PMID:35112312).

Stockage

Stockage:
Stocker à -20 °C. Éviter toute exposition à la lumière. Stable pendant un an après l'expédition.

Tampon de stockage:
PBS avec glycérol à 50 %, Proclin300 à 0,05 % et BSA à 0,5 %, pH 7,3.
L'aliquotage n'est pas nécessaire pour le stockage à -20C

***** Les 20ul contiennent 0,1% de BSA.**

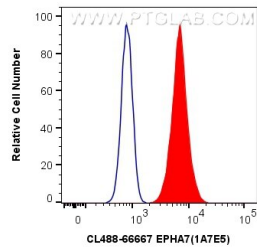
For technical support and original validation data for this product please contact:

T: 1 (888) 4PTGLAB (1-888-478-4522) (toll free
in USA), or 1(312) 455-8498 (outside USA)

E: proteintech@ptglab.com
W: ptglab.com

This product is exclusively available under Proteintech Group brand and is not available to purchase from any other manufacturer.

Données de validation sélectionnées



1X10⁶ SH-SY5Y cells were intracellularly stained with 0.4 ug CoraLite® Plus 488 Anti-Human EPHA7 (CL488-66667, Clone:1A7E5) (red), or 0.4 ug Control Antibody. Cells were fixed with 4% PFA and permeabilized with Flow Cytometry Perm Buffer (PF00011-C).