

À des fins de recherche uniquement

# Anticorps Monoclonal anti-ACE2

Numéro de catalogue: **CL488-66699** 2 Publications



## Informations de base

Numéro de catalogue: CL488-66699	Numéro d'acquisition GenBank: BC048094	Méthode de purification: Purification par protéine G
Taille: 100ul , Concentration: 1000 µg/ml by Nanodrop;	Identification du gène (NCBI): 59272	CloneNo.: 2F12A4
Hôte: Mouse	Nom complet: angiotensin I converting enzyme (peptidyl-dipeptidase A) 2	Dilutions recommandées: IF 1:50-1:500
Isotype: IgG1	MW calculé 805 aa, 92 kDa	Excitation/Emission maxima wavelengths: 493 nm / 522 nm
Immunogen Catalog Number: AG15554		

## Applications

Applications testées: FC (Intra), IF	Contrôles positifs: IF : tissu rénal humain,
Demandes citées: FC, IF	
Spécificité de l'espèce: Humain	
Espèces citées: Humain	

## Informations générales

ACE2 (Angiotensin-converting enzyme 2), also named as ACEH, is a zinc metalloprotease of the ACE family and a critical regulator of the reninangiotensin system. ACE2 has a more restricted tissue distribution than ACE, being found predominantly in the heart, kidneys, and testes although low levels have been detected in a variety of tissues (PMID:15983030). ACE2 has been shown to be a functional receptor of the human coronaviruses SARS-CoV and SARS-CoV-2 (PMID: 32142651). The expression level and expression pattern of human ACE2 in different tissues might be critical for the susceptibility, symptoms, and outcome of 2019-nCoV/SARS-CoV-2 infection (PMID: 32133153). It can be used as a potential therapeutic target of SARS-CoV-2 (PMID: 32125455). The calculated molecular weight of ACE2 is 92kDa but it migrates to 120kDa due to N-glycosylation (PMID:16166094). Sometimes, several cleaved fragments can also be detected as 75kDa, 50 kDa or 37kDa (PMID: 29561187, 22009550, 30759273). It has 2 isoforms produced by alternative splicing. This antibody is specific to ACE2.

## Publications notables

Autrice	Pubmed ID	Journal	Application
Feng Xie	34665481	Adv Mater	FC
Shouwen Du	35045269	J Virol	IF

## Stockage

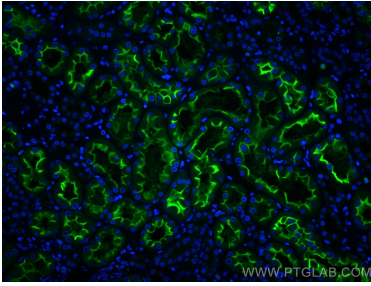
Stockage:  
Stocker à -20 °C. Éviter toute exposition à la lumière. Stable pendant un an après l'expédition.  
Tampon de stockage:  
PBS avec glycérol à 50 %, Proclin300 à 0,05 % et BSA à 0,5 %, pH 7,3.  
L'aliquotage n'est pas nécessaire pour le stockage à -20C

\*\*\* Les 20ul contiennent 0,1% de BSA.

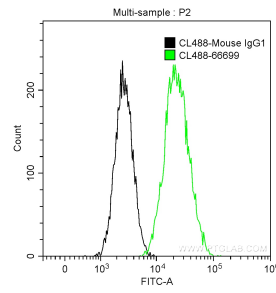
For technical support and original validation data for this product please contact:  
T: 1 (888) 4PTGLAB (1-888-478-4522) (toll free in USA), or 1(312) 455-8498 (outside USA)  
E: proteintech@ptglab.com  
W: ptglab.com

This product is exclusively available under Proteintech Group brand and is not available to purchase from any other manufacturer.

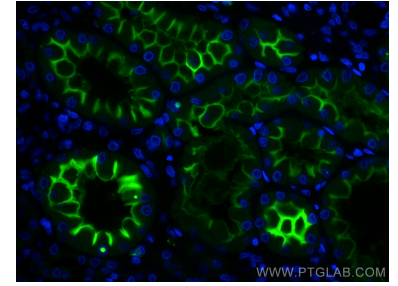
## Données de validation sélectionnées



Immunofluorescent analysis of (4% PFA) fixed human kidney tissue using CoraLite® Plus 488 ACE2 antibody (CL488-66699, Clone: 2F12A4) at dilution of 1:200.



$1 \times 10^6$  NIH/3T3 cells were stained with 1 ug CoraLite® Plus 488-conjugated Anti-Human ACE2 (CL488-66699, Clone:2F12A4) (green), and 1 ug Control Antibody. Cells were fixed with 90% MeOH.



Immunofluorescent analysis of (4% PFA) fixed human kidney tissue using CoraLite® Plus 488 ACE2 antibody (CL488-66699, Clone: 2F12A4) at dilution of 1:200.