

À des fins de recherche uniquement

# Anticorps Monoclonal anti-EPHA2

Numéro de catalogue: **CL488-66736** **Phare**



## Informations de base

Numéro de catalogue: CL488-66736	Numéro d'acquisition GenBank: BC037166	Méthode de purification: Purification par protéine G
Taille: 100ul , Concentration: 1000 µg/ml by Nanodrop;	Identification du gène (NCBI): 1969	CloneNo.: 1A9C3
Hôte: Mouse	Nom complet: EPH receptor A2	Excitation/Emission maxima wavelengths: 493 nm / 522 nm
Isotype: IgG1	MW calculé 976 aa, 108 kDa	
Immunogen Catalog Number: AG22566	MW observés: 130 kDa	

## Applications

Applications testées:  
FC (Intra)  
Spécificité de l'espèce:  
Humain

## Informations générales

Ephrin type-A receptor 2 (EPHA2), belongs to the receptor tyrosine kinases (RTKs) family, that binds promiscuously membrane-bound ephrin-A family ligands residing on adjacent cells, leading to contact-dependent bidirectional signaling into neighboring cells. Research studies have shown that Eph receptors and ligands may be involved in many diseases including cancer (PMID: 11114742). The "reverse signaling" function, whereby the cytoplasmic domain becomes tyrosine phosphorylated, allows interactions with other proteins that may activate signaling pathways in the ligand-expressing cells.

## Stockage

Stockage:  
Stocker à -20 °C. Éviter toute exposition à la lumière. Stable pendant un an après l'expédition.  
Tampon de stockage:  
PBS avec glycérol à 50 %, Proclin300 à 0,05 % et BSA à 0,5 %, pH 7,3.  
L'aliquotage n'est pas nécessaire pour le stockage à -20C

**\*\*\* Les 20ul contiennent 0,1% de BSA.**

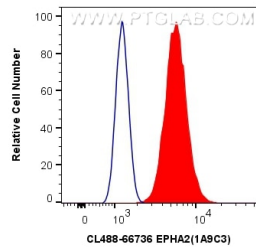
For technical support and original validation data for this product please contact:

T: 1 (888) 4PTGLAB (1-888-478-4522) (toll free  
in USA), or 1(312) 455-8498 (outside USA)

E: [proteintech@ptglab.com](mailto:proteintech@ptglab.com)  
W: [ptglab.com](http://ptglab.com)

**This product is exclusively available under Proteintech Group brand and is not available to purchase from any other manufacturer.**

## Données de validation sélectionnées



1X10<sup>6</sup> A431 cells were intracellularly stained with 0.4 ug CoraLite® Plus 488 Anti-Human EPHA2 (CL488-66736, Clone:1A9C3) (red), or 0.4 ug Control Antibody. Cells were fixed with 4% PFA and permeabilized with Flow Cytometry Perm Buffer (PF00011-C).