

À des fins de recherche uniquement

# Anticorps Monoclonal anti-EEF1A2

Numéro de catalogue: CL488-66806



## Informations de base

<b>Numéro de catalogue:</b> CL488-66806	<b>Numéro d'acquisition GenBank:</b> BC000432	<b>Méthode de purification:</b> Purification par protéine G
<b>Taille:</b> 100ul , Concentration: 1000 µg/ml by Nanodrop;	<b>Identification du gène (NCBI):</b> 1917	<b>CloneNo.:</b> 4F3F4
<b>Hôte:</b> Mouse	<b>Nom complet:</b> eukaryotic translation elongation factor 1 alpha 2	<b>Dilutions recommandées:</b> IF 1:50-1:500
<b>Isotype:</b> IgG1	<b>MW calculé</b> 50 kDa	<b>Excitation/Emission maxima wavelengths:</b> 493 nm / 522 nm
<b>Immunogen Catalog Number:</b> AG6875	<b>MW observés:</b> 48-50 kDa	

## Applications

<b>Applications testées:</b> IF	<b>Contrôles positifs:</b> IF : cellules U2OS,
<b>Spécificité de l'espèce:</b> Humain, porc, rat, souris	

## Informations générales

eEF1A2 is one of two isoforms (eEF1A1 and eEF1A2) of eukaryotic elongation factor 1 alpha (eEF1A or eEF1 $\alpha$ ). The two isoforms share more than 90% sequence identity and have the similar function that being a protein translation factor involved in protein synthesis. Addition, eEF1A2 plays an important role in cell cycle regulation, heat-shock response, aging, posttranslational modifications, and signal transduction (PMID: 25905039). eEF1A2 is expressed in heart, brain tissue, diaphragm and skeletal muscle while eEF1A1 is expressed ubiquitously (PMID:14588074). And the eEF1A2 protein stimulates the phospholipid signaling and activates the Akt-dependent cell migration and actin remodeling that ultimately favors tumorigenesis. It is reported that eEF1A2 was related with kinds of cancers such as ovarian cancer, prostate cancer, pancreatic cancer, breast cancer and lung cancer (PMID:14588074; 24853801; 25744894; 25905039). An 48 kDa band has also been reported (PMID: 24285179).

## Stockage

**Stockage:**  
Stocker à -20 °C. Éviter toute exposition à la lumière. Stable pendant un an après l'expédition.  
**Tampon de stockage:**  
PBS avec glycérol à 50 %, Proclin300 à 0,05 % et BSA à 0,5 %, pH 7,3.  
L'aliquotage n'est pas nécessaire pour le stockage à -20C

**\*\*\* Les 20ul contiennent 0,1% de BSA.**

For technical support and original validation data for this product please contact:

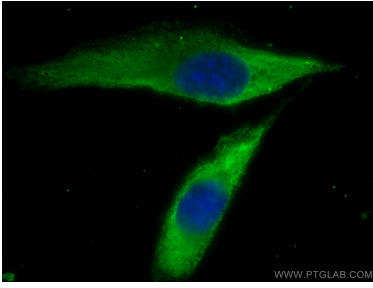
T: 1 (888) 4PTGLAB (1-888-478-4522) (toll free  
in USA), or 1(312) 455-8498 (outside USA)

E: [proteintech@ptglab.com](mailto:proteintech@ptglab.com)  
W: [ptglab.com](http://ptglab.com)

**This product is exclusively available under Proteintech Group brand and is not available to purchase from any other manufacturer.**

---

## Données de validation sélectionnées



Immunofluorescent analysis of (-20°C Methanol) fixed U2OS cells using CoraLite® Plus 488 EEF1A2 antibody (CL488-66806, Clone: 4F3F4) at dilution of 1:200.