

À des fins de recherche uniquement

Anticorps Monoclonal anti-Collagen Type VI



Numéro de catalogue: **CL488-66824**

Informations de base

| | | | | | |
|---------------------------|--|--------------------------------|----------------------------|---|-----------------------------|
| Numéro de catalogue: | CL488-66824 | Numéro d'acquisition GenBank: | BC052575 | Méthode de purification: | Purification par protéine A |
| Taille: | 100ul , Concentration: 1000 µg/ml by Nanodrop; | Identification du gène (NCBI): | 1291 | CloneNo.: | 3H10B1 |
| Hôte: | Mouse | Nom complet: | collagen, type VI, alpha 1 | Dilutions recommandées: | IF 1:50-1:500 |
| Isotype: | IgG2a | MW calculé | 1028 aa, 109 kDa | Excitation/Emission maxima wavelengths: | 493 nm / 522 nm |
| Immunogen Catalog Number: | AG11809 | MW observés: | 140-150 kDa | | |

Applications

| | | | |
|--------------------------|--------|---------------------|--------------------------------------|
| Applications testées: | IF | Contrôles positifs: | IF : tissu de cancer du foie humain, |
| Spécificité de l'espèce: | Humain | | |

Informations générales

Type VI Collagen is a major structural component of microfibrils. Type VI Collagen was found to be present throughout the connective tissue and in the extracellular matrix of cultured fibroblasts (PMID: 6723253). It is a heterotrimer composed of three different chains: alpha-1(VI), alpha-2(VI), and alpha-3(VI) or alpha-5(VI) or alpha-6(VI). The alpha-1(VI) chain is encoded by COL6A1 gene. Mutations in this gene result in Bethlem myopathy and Ullrich congenital muscular dystrophy.

Stockage

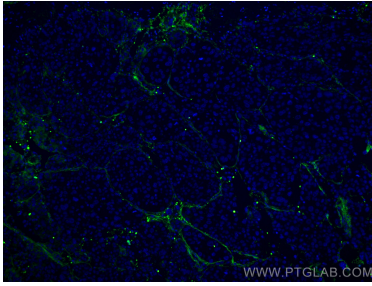
Stockage:
Stocker à -20 °C. Éviter toute exposition à la lumière.
Tampon de stockage:
PBS avec glycérol à 50 %, Proclin300 à 0,05 % et BSA à 0,5 %, pH 7,3.
L'aliquotage n'est pas nécessaire pour le stockage à -20C

***** Les 20ul contiennent 0,1% de BSA.**

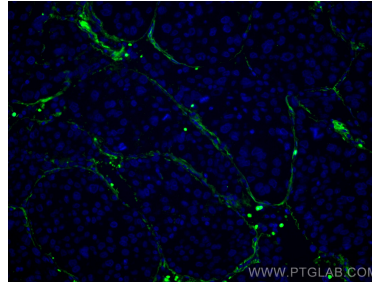
For technical support and original validation data for this product please contact:
T: 1 (888) 4PTGLAB (1-888-478-4522) (toll free in USA), or 1(312) 455-8498 (outside USA) E: proteintech@ptglab.com W: ptglab.com

This product is exclusively available under Proteintech Group brand and is not available to purchase from any other manufacturer.

Données de validation sélectionnées



Immunofluorescent analysis of (4% PFA) fixed human liver cancer tissue using CoraLite® Plus 488 Collagen Type VI antibody (CL488-66824, Clone: 3H10B1) at dilution of 1:200.



Immunofluorescent analysis of (4% PFA) fixed human liver cancer tissue using CoraLite® Plus 488 Collagen Type VI antibody (CL488-66824, Clone: 3H10B1) at dilution of 1:200.