

À des fins de recherche uniquement

Anticorps Monoclonal anti-APOE

Numéro de catalogue: CL488-66830



Informations de base

Numéro de catalogue:	CL488-66830	Numéro d'acquisition GenBank:	BC003557	Méthode de purification:	Purification par protéine G
Taille:	100ul , Concentration: 1000 µg/ml by Nanodrop;	Identification du gène (NCBI):	348	CloneNo.:	1B2C9
Hôte:	Mouse	Nom complet:	apolipoprotein E	Dilutions recommandées:	IF 1:50-1:500
Isotype:	IgG1	MW calculé	36 kDa	Excitation/Emission maxima wavelengths:	493 nm / 522 nm
Immunogen Catalog Number:	AG28186	MW observés:	34-36 kDa		

Applications

Applications testées:	FC (Intra), IF	Contrôles positifs:	IF : cellules HepG2,
Spécificité de l'espèce:	Humain, souris		

Informations générales

The apolipoprotein E (APOE) is a 299-amino acid polypeptide that mediates the binding, internalization, and catabolism of lipoprotein particles, and also serve as a ligand for the LDL (APO B/E) receptor and for the specific APOE receptor (chylomicron remnant) of hepatic tissues. The very strong association of the APOE ε4 allele with AD risk and its role in the accumulation of amyloid β in brains of people and animal models solidify the biological relevance of APOE isoforms but do not provide mechanistic insight.

Stockage

Stockage:
Stocker à -20 °C. Éviter toute exposition à la lumière. Stable pendant un an après l'expédition.
Tampon de stockage:
PBS avec glycérol à 50 %, Proclin300 à 0,05 % et BSA à 0,5 %, pH 7,3.
L'aliquotage n'est pas nécessaire pour le stockage à -20C

***** Les 20ul contiennent 0,1% de BSA.**

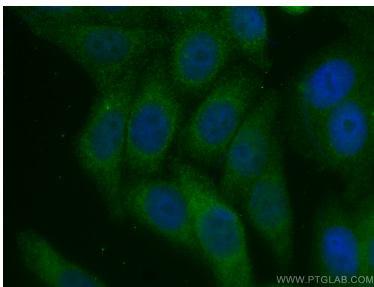
For technical support and original validation data for this product please contact:

T: 1 (888) 4PTGLAB (1-888-478-4522) (toll free in USA), or 1(312) 455-8498 (outside USA)

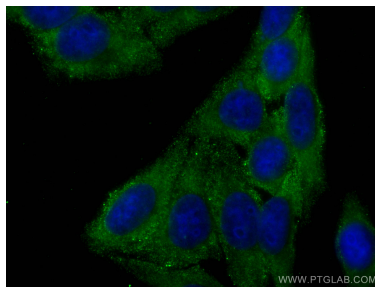
E: proteintech@ptglab.com
W: ptglab.com

This product is exclusively available under Proteintech Group brand and is not available to purchase from any other manufacturer.

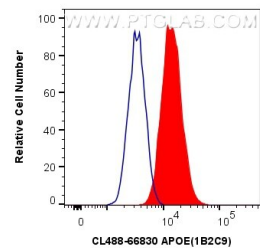
Données de validation sélectionnées



Immunofluorescent analysis of (4% PFA) fixed HepG2 cells using CoraLite® Plus 488-conjugated APOE antibody (CL488-66830, Clone: 1B2C9) at dilution of 1:100.



Immunofluorescent analysis of (-20°C Ethanol) fixed HepG2 cells using CoraLite® Plus 488 APOE antibody (CL488-66830, Clone: 1B2C9) at dilution of 1:200.



1X10⁶ HepG2 cells were intracellularly stained with 0.4 ug CoraLite® Plus 488 Anti-Human APOE (CL488-66830, Clone:1B2C9) (red), or 0.4 ug CoraLite® Plus 488 Mouse IgG1 Isotype Control (MOPC-21) (CL488-65124, Clone: MOPC-21) (blue). Cells were fixed with 4% PFA and permeabilized with Flow Cytometry Perm Buffer (PF00011-C).