

À des fins de recherche uniquement

Anticorps Monoclonal anti-TFPI

Numéro de catalogue: **CL488-66842**



Informations de base

Numéro de catalogue: CL488-66842	Numéro d'acquisition GenBank: BC015514	Méthode de purification: Purification par protéine A
Taille: 100ul, Concentration: 1000 µg/ml by Nanodrop;	Identification du gène (NCBI): 7035	CloneNo.: 1B12F11
Hôte: Mouse	Nom complet: tissue factor pathway inhibitor (lipoprotein-associated coagulation inhibitor)	Dilutions recommandées: IF 1:50-1:500
Isotype: IgG2a	MW calculé 251aa,29 kDa; 304aa,35 kDa	Excitation/Emission maxima wavelengths: 493 nm / 522 nm
Immunogen Catalog Number: AG14980	MW observés: 35-38 kDa	

Applications

Applications testées: FC (Intra), IF	Contrôles positifs: IF : cellules HepG2,
Spécificité de l'espèce: Humain	

Informations générales

Tissue factor pathway inhibitor (TFPI) is a critical anticoagulant protein present in endothelium and platelets. TFPI is produced as two major isoforms in humans, TFPIa and TFPIb that result from alternative splicing. The TFPIb isoform localizes to the endothelium surface where it is a potent inhibitor of tissue factor-factor VIIa complexes that initiate blood coagulation. The TFPIa isoform is present in platelets. TFPI is a Kunitz-type serine protease inhibitor that exerts anticoagulant activity by blocking early procoagulant stimuli. TFPI can enhance anti-thrombotic treatment in sepsis, inflammatory diseases, and cardiovascular diseases.

Stockage

Stockage:
Stocker à -20 °C. Éviter toute exposition à la lumière. Stable pendant un an après l'expédition.
Tampon de stockage:
PBS avec glycérol à 50 %, Proclin300 à 0,05 % et BSA à 0,5 %, pH 7,3.
L'aliquotage n'est pas nécessaire pour le stockage à -20C

***** Les 20ul contiennent 0,1% de BSA.**

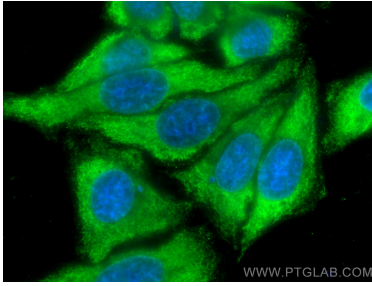
For technical support and original validation data for this product please contact:

T: 1 (888) 4PTGLAB (1-888-478-4522) (toll free
in USA), or 1(312) 455-8498 (outside USA)

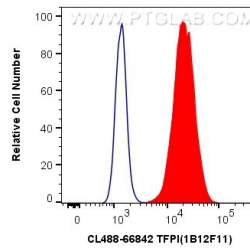
E: proteintech@ptglab.com
W: ptglab.com

This product is exclusively available under Proteintech Group brand and is not available to purchase from any other manufacturer.

Données de validation sélectionnées



Immunofluorescent analysis of (-20°C Ethanol) fixed HepG2 cells using CoraLite® Plus 488 TFPI antibody (CL488-66842, Clone: 1B12F11) at dilution of 1:200.



1X10⁶ HepG2 cells were intracellularly stained with 0.4 ug CoraLite® Plus 488 Anti-Human TFPI (CL488-66842, Clone:1B12F11) (red), or 0.4 ug Control Antibody. Cells were fixed with 4% PFA and permeabilized with Flow Cytometry Perm Buffer (PF00011-C).